

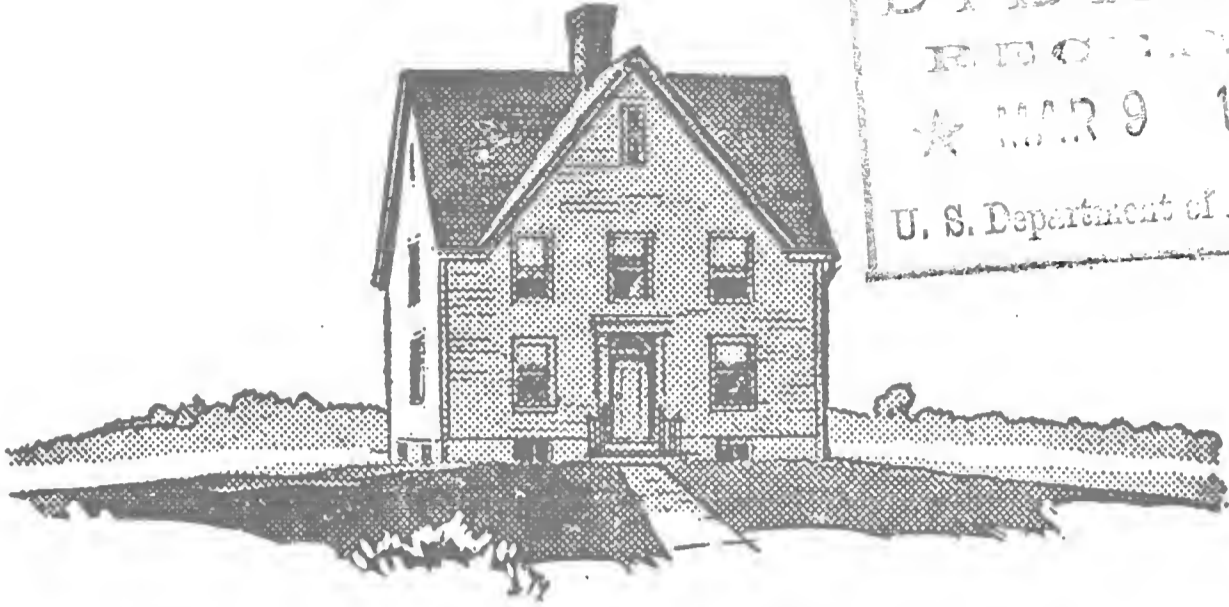
## **Historic, archived document**

Do not assume content reflects current scientific knowledge, policies, or practices.



207

LIBRARY



BEFORE PLANTING

LIBRARY  
 RECEIVED  
 ★ MAR 9 1933 ★  
 U. S. Department of Agriculture



AFTER PLANTING

1933 FLOWER AND PLANT GUIDE  
 and 11th Annual Catalogue

**Taylor's Greenhouses  
 & Nursery**

Plants - Evergreens - Shrubs - Cut Flowers

216 East J St. RUSSELLVILLE, ARK. Phone 326

VEGETABLE  
 SEED TRIALS  
 HORTICULTURE

FEB 20 1933

# Read Carefully Before Ordering

Remittance should be made with each order. Make them the way that is most convenient to you. Personal checks are good if you have cash in the bank to cover it.

**MY GUARANTEE**—Everything entirely satisfactory and as good or better than represented or you may return at my expense and receive all money you have been out. We do not guarantee plants to live, neither do we guarantee them to produce, but we do guarantee that you receive good, healthy plants in good condition.

**OUR MOTTO**—"Quick Service; a square deal to all." It is plants we ship, not mere promises.

**SUBSTITUTING**—If temporarily out of any variety, we will substitute another equally as good unless you state—Do not Substitute.

**PRICES**—We request that you compare our prices with others. The more you investigate the better you will be pleased. A trial is all we ask.

**HOT BED PLANTS**—Have no soil on the roots, therefore will be much cheaper than pot plants.

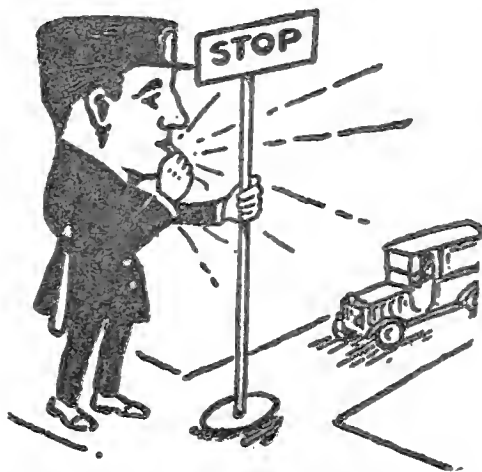
**POT GROWN**—Are grown in small flower pots and mailed postpaid to the customer with the ball of earth on them, which is matted together with roots. All our flowering plants are pot grown, unless stated otherwise.

**PERENNIALS**—Plants that are hardy or will grow outside and bloom from year to year.

**ANNUALS**—Plants that reach their best the first year and must be planted again each year.

**REFERENCE**—Bank of Russellville, Russellville, Arkansas; American Railway Express Company, Russellville, Arkansas.

*No Sunday Business Whatever, Except Flowers For Funerals*



**You May Take 20 Per Cent Off  
The Prices Quoted in This  
Book, Except on Page 19.**

**CERTIFICATE OF INSPECTION** by the State  
Plant Board Given with All Plants, Trees and Shrubbery.

*We Comply With All State Laws.*

**Cut Flowers For All Occasions**

*SAY IT WITH FLOWERS AND  
SAY IT WITH OURS*

Everything in this book Postage or Express Paid, except  
balled and burlaped trees, which are f. o. b. Russellville.



# INDEX

	Page		
<b>A</b>			
Alternantheras	9	Fuchsias	5
Artillery Plant	10	Fire Dragon	13
Alocasia Illustris	10	Forsythia	24
Acalpha	9-13	Fancy Leaved Caladium	10
Antigon Lepthopus	13	Fish	16
Allysum	5	Fish Bowls	16
Amaryillis	13	Fish Castles	16
Asters	13	Fish Food	16
Ageratum	17	Flower Seed	22
Adams' Needles	18	Fertilizer	15
Altheas	25	Flame Flower	18
Abelia Grandflora	24	<b>G</b>	
Arizona Cypress	26	Green Sheet Moss	23
Arbor Vitae	26-27	Gladilolus	14
American Elm	27	Geraniums	6-15
Acquatic Plants	12-16	Grass Plants	18
Aquifolia	27	Golden Glow	18
<b>B</b>			
Bermuda Onion	19	Golden Bells	24
Begonia	6	Grape Vines	21
Brazilian Plume Plant	17	Golden Elder	24
Banana	17	Gold Fish	16
Butterfly Bush	24	Gold Fish Supplies	16
Bush Honeysuckle	25	Giant Arrow	17
Berbis Thumberg	24	<b>H</b>	
Begonia	24	Hanging Baskets	23
Bonita Arbor Vitae	26	Horse Radish	21
Bird of Paradise	24	Hibiscus	17-18-25
Bleeding Heart	18	Hydrangeas	11-25
Bougainvillea	8	Heliotropes	17
Beauty Bush	25	Hardy Phlox	9
Bird Baths	15	Hills of Snow	25
Book on Birds	15	Honeysuckle Vine	24-25
Book on Goldfish	16	<b>I</b>	
Broadleaf Evergreens	27	Ivies	9
Balm of Gilead	27	Ipahiens	10
<b>C</b>			
Clematus	15	Ice Plants	13
Cabbage Plants	19	Iris	13
Catnip	21	Irish Juniper	22
Cannas	12	<b>J</b>	
Coleus	8	Junipers	26-27
Cape Jasmine	17-24	Japanese Rose	26
Chrysanthemums	8	Jew	9
Caladium	10	Japanicas	25
Cinnamon Vine	9	Justica Carnea	17
Cupheas	10	<b>K</b>	
Cigar Plant	10	Kudeza Vine	13
Cactus	10	Kolkwitzia	25
Comet Plant	9	Kerria Japonica	26
Carnation	14	<b>L</b>	
Calla Lily	13	Lombardy Poplar	27
Crepe Myrtle	25	Lantanas	13
Cornus Sibirica	25	Lady Finger	13
Cedrus Deodra	26	Lillies	13
Catalpa Bungeri	27	Lemons	13
Carolina Poplar	27	Lathyrus	13
Calycanthus	24	Lillac	24
Crimson Lake	8	Locust	25
Columbines	13	Ladies Ear Drops	5
Calenduas	13	Landscape Plans	23
Cypress	26	Lonicera	25
California Privet	24	Lucidum	27
Chinese Paper Plant (See Bougainvillea)		<b>M</b>	
Crassula	15	Mint	21
Cherry Laurel	27	Moss	23
Chinese Elm	27	Moon Vines	7
<b>D</b>			
Dogwood	25	Mountain Rose	13
Dwarf Coleus	9	Mallow	18-25
Dahlias	11	Mock Orange	24
Daisies	13	Marigold	10
Delphinium	18	Matrimony Vine	24
Deutzias	25	Mulberry	27
Dusty Miller	17	Magnolia Grandiflora	27
<b>E</b>			
Egg Plant	21	Madagasscar	10
Easter Greeting	6	Mahonia	27
Eulalia Japonica	18	Mimosa	27
Euphorbia	13	<b>N</b>	
Elephant Ear	10	Nandina	27
Evonymous	25-27	<b>O</b>	
Elm	27	Oleanders	14
Evergreens	26-27	Oranges	13
Darlingtonia	1-17	Onion Plants	19
Dicentra Spectabilis	18	Oregon Grape	27
<b>F</b>			
Flowering Crabs	25	<b>P</b>	
Flowering Locust	25	Potato Plants	19
Ferns	7	Pie Plants	21
		Pepper Plants	19
		Pilea	10
		Pelargonium	6
		Peonies	7
		Parrot Feather	16
		Periwinkle	10
		Poplars	27
		Petunas	14
		Purple Plant	15
		Pandanus Veitchi	10
		Pansies	13
		Phlox	13
		Perennial Sweet Peas	13
		Philadelphus	24
		Privet	24
		Pomegranite	24
		Pearl Chips	16
		Plumbago	13
		Parrots	15
		Pets	15
		<b>Q</b>	
		Queens Wreath	13
		<b>R</b>	
		Rhubard	21
		Royal Purple Plant	15
		Rubber Plant	7
		Russelia Elegantissima	13
		Roses	4-5
		Rudbeckia	18
		Red Hot Poker	18
		Rose of Sharon	25
		Red Branched Dogwood	25
		Red Barbory Thunburgi	24
		Red Bud	27
		<b>S</b>	
		Sweet Potato Plants	19
		Sage	21
		Sweet Pepper	19
		Salvia	17
		Scarlet Sage	17
		Sword Cactus	10
		Sultan's	10
		Sanservieria	8
		Snake Plant	8
		Scarlet Fountain Plant (See Russelia)	13
		Strobilianihus Oyerianus (See Royal Purple Plant)	21
		Shasta Daisy	18
		Snap Dragon	7
		Spirea	25-26
		Syringia	24
		Snow Berry	24
		Snow Ball	24
		Sycamore	27
		Silver Leaf Poplar	27
		Snow on the Mountain	13
		<b>SEED—</b>	
		Flower and Garden	22
		Sanderiana	17
		Sugar Maple	27
		Sweet Allysum	5
		Sheet Moss	23
		Shrubbery	23,24,25,26,27
		<b>T</b>	
		Tomato Plants	20
		Tiger Plant	8
		Trailing Velvet Plant	17
		Tritoma	18
		Tramrix	24
		Tasmani Bean	22
		<b>U</b>	
		Umbrella Plant	12
		Umbrella China	27
		Tub Garden	17
		Torch Lily	18
		<b>V</b>	
		Vincia Varigata	9
		Verbena	9
		Velvet Plant	13-17
		Vegetable Seed	22
		Vinca	10
		Vigoro Fertilizer	15
		<b>W</b>	
		Water Hyacinths	16
		Wandering Jew	9
		Wisteria	24
		Weigealas	25
		Willow	27
		Water Lilies	16
		Water Poppy	17
		Wax Leaf	27
		<b>Y</b>	
		Yucca	18
		<b>Z</b>	
		Zineas	14
		Zanzibar Balsam	10
		Zebra Plant	8
		Zeberiana Grass	18



## TAYLOR'S CHOICE ROSES



All Plants Postpaid Unless Otherwise Stated

**BABY DOLL, OR TIP TOP**—Blossoms, golden yellow. Beautifully small, delicate. Price, 15c.

**MABEL DREW**—The color is a deep cream in the young state, to intense canary-yellow in the center as the flower develops. Price, 20c.

**JONKHEER J. L. MOCK**—Large flowers. erect stems, heavy foliage, quick growth, rich pink; a rose among roses. This is one of our favorites. Price, 20c; 2 for 35c.

**KAISERINE AUGUSTA VICTORIA**—White; a real rose. Price, 20c; 2 for 35c.

**CLOTHILDE SOUPERT**—A fine bedder; produces large quantities of medium-sized roses; the color effect is beautiful; ivory white, shading toward center to a bright silvery pink, everybody's rose. Price, 15c.

**SOUVENIR DE PIERRE NOTTING**—beautiful long bud, large blossoms; orange yellow bordered, with carmine. Price, 15c.

**CLIMBING COLUMBIA**—A hardy, ever-blooming pink climbing rose. Buds and blossoms immense size; borne on long stems for cutting. Petals large, color clear, imperial pink. Many have been wanting this rose. Each, 20c.

**NATIONAL EMBLEM**—Buds large, long and pointed; very beautiful; flowers freely and continuously all season. Double. Color, dark crimson. Price, 20c.

**OPHELIA**—Strong growth; flowers on long stems; attractive buds; rich shade salmon flesh shaded with rose. Price, 20c; 2 for 35c.

**KILLARNEY**—Very fine; pink; everblooming. Each, 20c; 2 for 35c.

**AMERICAN BEAUTY**—Red; enough said. Price, 25c.

These Pot Grown Roses May Be Planted Successfully any Time From Now Until the End of June. Grown in 2 1-4 inch Pots.

Taylor's Roses are everbloomers, Pot Grown and Sent Postpaid.

The ideal garden has many Roses in it. Roses here, and there, and everywhere. There cannot be too many of them. They will bloom well, comparatively speaking, in ordinary soil, but must be given very rich soil if you want them to do their best. Work plenty of old manure in soil and grow specimens. The Rose likes heavy soil; it prefers clay loam instead of sandy loam. For best results, cut back heavy.

(All varieties are monthly or everybloomers unless specified otherwise).

**JOSEPHINE VESTAL**—In this magnificent Rose we find a rose of attractive coloring. It might be described as a salmon-flesh, tinted rose, with a touch of yellow at the base. Buds of unusual attractiveness, opening full and double, unusually long and beautifully pointed petals of wonderful depth and substance. Very fragrant, growth strong, almost thornless, flowers on long stems, and in great profusion all summer, Grand for outdoors. 30c each; 2 for 55c.

**CITY OF LITTLE ROCK**—Surprisingly beautiful. It is distinct and beautiful in color, a rose pink. The buds which open perfectly, are long and ideal form. The growth is vigorous and the flowers are produced profusely. Its pronounced fragrance will attract all Rose lovers. Price, 20c; 2 for 35c.

**PINK MAMAN COCHET**—The flowers are of enormous size, very full and of great depth and substance. Color, rich coral-pink, elegantly shaded with rose crimson; has broad, thick shell-like petals and makes superb long-pointed buds. Price, 20c.

**MME. BUTTERFLY**—Bright pink, apricot and gold. Price, 15c.

**COLUMBIA**—Flowers are very large, being a giant pink. A rank grower. Blossoms with a great freedom. Buds are borne on long stiff, straight stems. Very fragrant. Fully double. Fine for garden culture. Price, 20c.

**ALEXANDER HILL GRAY**—Pure yellow. Large full flowers with high pointed centers. Free producer; robust, vigorous and erect, Price, 15c.

**SUNBURST**—This giant yellow rose is a fine forcer; ranks high in its class; color, orange coppery; everblooming. Another favorite. Price, 15c.

**BRIDE**—Pure white under glass, taking on a delicate pink tinge out of doors. Forces well and produces abundantly for cut flowers. Price, 15c.

**BRIDESMAID**—Clear, shining pink, buds of exquisite shape; stems long and stiff; a profuse bloomer. A leader of pink forcing Roses since 1893, and likewise an outdoor favorite. Price, 15c.

**WILLIAM R. SMITH**—Creamy white with shading of pink; a seedling from Maman Cochet and Kaiserine Augusta Victoria; beautiful in form and color; glossy foliage; long stiff stems; vigorous growth. Price, 15c.

**HELEN GOOD**—Helen Good is a genuine Cochet, being a sport from Maman Cochet. It is identical in foliage, growth, size and shape of flower, different only in color. It is a delicate pink, fully distinct from Maman Cochet. Price, 20c.

**SENSATION**—An entrancing shade of red; stems long and pointed. Heavy foliage; stands among the best roses. Price, 25c.

**CRUSADER**—Strong growing variety. Blooms big and double. Color, a rich velvety crimson. Flower stems are strong. A good grower and free bloomer. Price, 20c.

**FRANCES SCOTT KEY**—Some flowers have as high as sixty petals and sometimes more opening to a very high center; color is a magnificent red. Is very easy to cultivate and requires little care. Price, 20c.

**COMMONWEALTH**—This new Rose has large, long pointed buds, borne singly on medium strong stems. Color, an even deep pink, would be called a solid color. A vigorous grower, delightfully fragrant. Price, 25c.

**CLIMBING SUNBURST ROSE**—The same as Sunburst, except this is a climbing. One of the finest climbing yellow Roses. Price, 20c.

**RED RADIANCE**—Hardy, free bloomer, vigorous grower, large, double red blooms. Price, 20c.

**PINK RADIANCE**—Giant flowering, fine buds, very double; fine for cut flowers. Price, 20c.

**CLIMBING AMERICAN BEAUTY**—Color, a rich glowing crimson. Same color and qualities as the American Beauty, only this is a climber. Price, 20c.

**TALISMAN**—A very popular rose because of its brilliant red bud, opening to a growing golden yellow, stained with copper red and orange rose on inside of petals. Pot grown plants. 35c each; 3 for 95c.

**REINE MARIE HENRIETTA ROSE**—A very strong growing climber; rich brilliant crimson. Price, 15c each.

**J. B. CLARK**—Deep scarlet, shaded blackish crimson; large, beautiful flowers. Price, 25c.

**FRAU KARL DRUSCHKI**—"White American Beauty." The distinctive form and expression of its bud, half open state and maturity, are a three-fold revelation of exquisite charm and beauty. They commence blooming with the June Roses, are conspicuous throughout the summer with their large flowers of waxy paper white, and yield their last armful with the first snows of fall. Price, 25c.

**DARDANELLE**—Well shaped buds of cherry red, grand in size, the expanded flowers changing to a pretty shade of cherry rose, sweetly scented. Dardanelle is a novelty of the greatest merit and we are certain that it is destined to become a great popular favorite. Apart from the glorious color it has all the good points we expect to find in a good garden Rose. Price, 30c.

**LA FRANCE**—(Pink)—No variety can surpass it in delicate coloring—silvery rose shades, with pink. It has a satin sheen over all its petals. It is hardy beyond question. It blooms continuously. The flower is large, finely built, endures for a great length of time, is exquisitely colored and fragrant in the highest degree. Price, 20c.

**HELEN GOULD**—This is a grand Rose of the very highest merit for the garden; bright watermelon-red; very free grower and bloomer. Price, 20c.

**PAUL NEYRON**—Largest of Roses, blooms two or three times a year. Color, pink; shading to rose, most beautiful in the massiveness of the blooms. Very fragrant with mild touch of apple blossoms. The rose is very strong and vigorous and is considered by Rose growers as suited for outdoor planting. Price, 20c.

## FUCHSIAS

(LADIES' EAR DROPS)

Will grow in almost any soil, but does best in a light, open, spongy one. It must be well watered. Do not allow the roots to become dry. A daily shower on its foliage will be a great help. It likes the morning sun or will do well in a partial shade. Never expose to the hot midday or afternoon sun. All pot grown. Postpaid.

**BLACK PRINCE**—One among the very finest Fuchsias grown for the beginner. It makes a shapely bush; robust in growth. Blossoms of a beautiful waxy carmine or pink color. 15c each, 2 for 25c.

**SPECIOSA**—(known as the Winter Bloomer)—Color, rich carmine and rose. Remarkable for its bright glossy green leaves. Price, 15c; 2 for 25c.

**TRAILING QUEEN**—This Fuchsia is an entirely new different from other large-flowering varieties in its habit of growth, is a trailing vine. The young plants, as they commence growth, creep out to the edge of the pot, and then go trailing downward. It continues growing and branching in this way until the vines are a solid wavy mass of the most elegant foliage and perfect flowers. The flowers are borne in large drooping clusters; very large, long, graceful sepals scarlet, corolla purple. 15c each or 2 for 25c.

**LITTLE BEAUTY**—The greatest novelty in Fuchsias. The loveliest-flowering, dwarf-growing Fuchsia known. It is a superb and handsome little beauty, branching like a tree and covered with enormous perfectly formed flowers. Sepals bright scarlet, with rich violet-purple corollas. Vigorous growing, free flowering, a most charming window plant, remarkable for its constant profusion of beautiful flowers, one of the most desirable Fuchsias in cultivation. 15c each or 2 for 25c.

**GIANT PINK**—Characteristically similar to Mrs. Hill, but with more petalage, and with the deep pink of the calyx heavily veining the corolla. 15c each; 2 for 25c.



FUCHSIA

## ALYSUM

A fine small growing plant for borders or beds. White. Price, pot grown plants, each, 5c; per dozen, 35c; hot bed plants, 15c dozen; two dozen 25c.



# TAYLOR'S CHOICE GERANIUMS

## TAYLOR'S CHOICEST GERANIUMS LARGE DOUBLE

Price, 15c each; three for 40c; six for 75c; dozen, \$1.25. Assort as you like. Postpaid.

**IRVINGTON BEAUTY**—Every branch producing an immense truss of rosy, salmon-pink bloom. A four inch pot plant often showing five to seven large perfect trusses. It is just as fine for bedding as for pot culture and the most persistent bloomer in the Geranium family.

**SCARLETT BEDDER**—A free bloomer. One of the best Scarlett you will find. A real outstanding geranium.

**PINK BARNEY**—The best double pink color, bright rosy-pink with distinct white blotch in center. A free bloomer.

**FIAT**—Semi-double salmon pink. Flowers are perfect and plant healthy and attractive.

**LANDRY**—Distinct salmon pink shading to scarlet; enormous blooms. Will stand extreme heat.

**RADIO RED**—Darkest and richest Geranium grown. It is a very bright dark, deep, rich velvety maroon, an excellent bedder and a perfect pot plant.

**DUKE DE MONTMART**—This is nearest to the blue geranium. It is more strictly speaking a rich purple; a striking color.

**ALPHONSOE RICCARD**—A most beautiful shade of bright vermillion, large flowers and enormous trusses a grand variety.

**AMERICAN BEAUTY**—Flowers light red color; large and double; fine for pots or bedding.

**S. A. NUTT (Queen of Crimson)**—Said to be the best dark red bedder; a great bloomer; double. A great favorite.

**BEAUTE POITEVINE**—A beautiful variety, with large double flowers of a bright salmon pink; very fine.

**BUCHNER**—Plants bushy, large flowers; pure white; fine for pot or bedding.

**JEAN OBERLE**—One of the most beautiful among the colors; known as peach or hydrangea pink. Plants strong and free bloomers.

**JEAN VIAUD**—Among the best large flowering double pink geraniums, color rich deep pink, shading near the base of petals to light pink.

**HELEN MITCHELL**—Clear, brilliant, scarlet. One among the best.

The above are all double.

### EASTER GREETING

#### New Everblooming Pelargonium

Flowers large and free blooming; amaranth red; each petal marked with a large black blotch. A fine variety to grow, on account of its long blooming season. Price, 20c; 3 for 50c.

(Geraniums Continued on Page 15)



Eben E. Rexford, in his book on flower culture, states, as follows: "If I were asked to name the one flower best adapted to general culture I would unhesitatingly name the geranium as the flower. It is of easy culture. All that is asked is good soil, enough water to keep roots moist, but never wet, sunshine, and away from frost."

Geraniums will not stand much water, neither will they bloom well in a large pot.

**MRS. RICHARD GLOEDE**—A very good new Geranium that is being grown more widely each year. The color is similar to American Beauty but not more brilliant. Of good branching growth.

**MRS. E. G. HILL**—A good single geranium and a profuse bloomer of a soft, light salmon; each petal bordered with rose salmon.

**IVY-LEAVED GERANIUMS**—Very fine for baskets, either trailing or climbing. Color, pink, salmon, red, lavender and cerise. State color wanted.

**STRAWBERRY GERANIUMS**—Leaves nearly round and striped freely with silver bands. Blooms white. Easily grown. Does well in sun or shade. Does not resemble the Geranium. 10c each, 3 for 25c; fine for baskets.

**SWEET SCENTED GERANIUMS**—Nutmeg, lemon and rose are the three different varieties. 15c each or two for 25c.

**OUR LOSS IS YOUR GAIN**—We have a lot of Geraniums that tags have been lost from. They are nice plants, but they are mixed. We do not know the color, so will sacrifice them for only 10c; 3 for 25c; dozen, 90c.

## Taylor's Choice Begonias

(All Pot Grown)

**CORALLINA LUCERINE**—Bright coral red, changing to delicate pink. The foliage is dotted with silvery white; will stay in bloom for months. Sure to please. Fine plants only 20c.

**THURSTONI**—The flowers are a beautiful deep pink in bud, but when fully expanded become a beautiful shell pink. Leaves large and polished or emerald green color, blood red underneath. Very showy. Price, 20c.

**ARGENTA GUTTATA**—Purple bronze leaves with silver markings. White flowers; fine plants. 15c each.

**RUBIA BEGONIA**—The Rubia is one among the best Begonias; has dark glossy green leaves; makes a wonderful house plant; free bloomer. The flowers are scarlet rose color. Price, 20c. 3 for 50c.

**METALLICA**—The Metallica Begonia has large hairy leaves with metallic luster; blooms are pink. Price, 20c.

**BEEFSTEAK BEGONIA**—(called by some the Strawberry Leaf Geranium)—The leaves have silver top, red underneath. Very ornamental. Flowers, pink. Price plants, 15c, larger one, 25c.

**BEGONIAS**—(known as the Everblooming Varieties)—Very fine for bedding out or for pot plants. They are great bloomers, almost perpetual. Small foliage, glossy green, turning to a purplish bronze. State color, red or pink, 18c each; 2 for 35c; 6 for 90c.

**REX BEGONIA**—Our Rex Begonias are the most beautiful of foliage plants with beautiful colored leaves of enormous size, making an unequalled house plant; sure to please. Price, 25c.



## DECORATIVE FERNS

ALL FERNS ARE POT GROWN

More Ferns are killed by watering than from lack of it. When soil is sticky, do not water. When soil is dry, water thoroughly. The best way is to stand pot in basin of water 15 minutes. Watch for the very small white specks on underside of leaf near base of stem, for this spray with Shep, enough Shep to make 4 gallons of spray for 40c. Postpaid.

**WHITMANII** (Ostrich Plume Fern)—More of a dwarf than the Boston Fern. The fronds are of entirely different nature. Each frond is subdivided on the order of the Compacta Fern, thus producing a very beautiful effect. Its decorative ability is excellent. Price, 15c.

**SPLENDIDA**—"The Big Four Fern"—a decided novelty. It combines the good qualities of the four most popular sorts—the grace of the Boston, wavy effect of Roosevelt, fluffy effect of Ostrich Plume, and the uniqueness of the Fish Tail. Price, 15c.

**NORWOOD FERN** (Fluffy Ruffles)—A dwarf compact fern similar to the Ostrich Plume, carrying its fronds and erect. Makes an ideal specimen. A favorite of mine. Good plants, at 15c each.

**NEPHROLEPIS SPARROWII FERN** — We are glad to offer our customers this new variety. Quite robust, rapid and easy grower, can be grown with success by the amateur; dark green foliage, beautiful crested fronds. Price, 15c.

**SCOTTIE** ("The Newport Fern")—It is a rapid grower and to see it in all stages of growth from a runner in the bench to a pot specimen. Will convince you of the demand as a house fern. Price, 15c

**SMITHI FERN**—(Baby Breath)—An improvement over the Ostrich Plume; compact form fronds on wiry stems. Very attractive. A popular variety. Price, 15c.

**NEW FERN** (John Wanamaker)—This new fern is quite distinct from other ferns, growing rapidly, making an abundance of long, narrow drooping fronds. This is a very durable house fern. Price, 15c each.

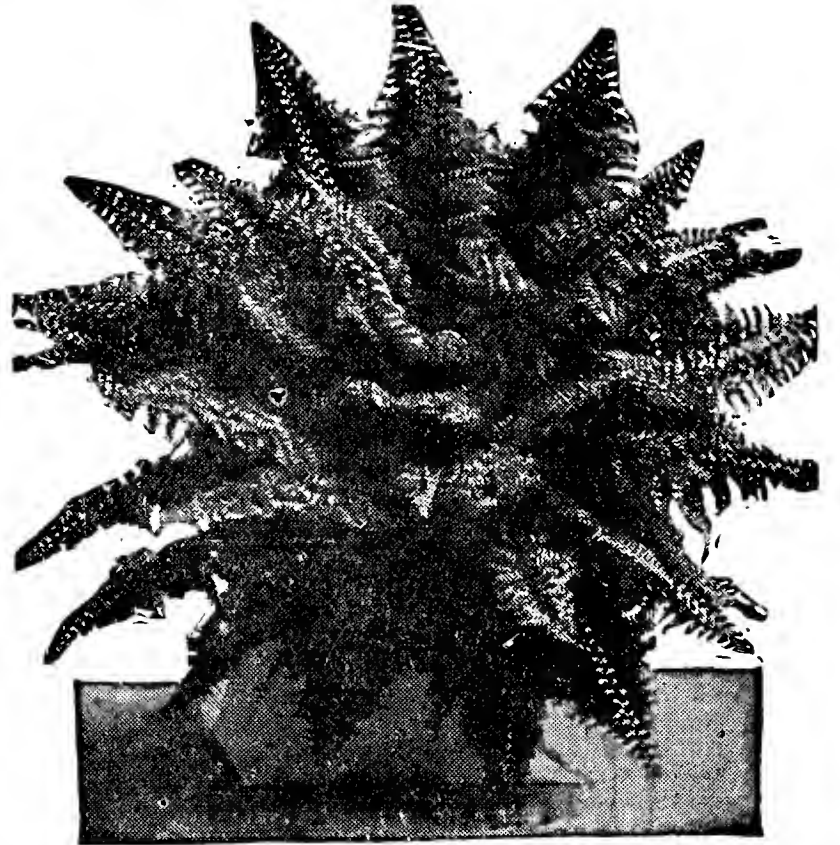
**FEATHER FERN** (Asparagus Sprengerii) — The plants are rapid growth, growing freely all year, producing large sprays. Fine for window boxes or hanging baskets. A fine house plant. Foliage used for cut flower work or in bouquets. Keeps fresh a long time. Price, 15c. Larger Plants, 25c.

**BOSTON FERNS**—An old stand-by that is hard to beat. Has long, graceful drooping fronds. Grows very large and is very popular. Price, 15c; larger plants, 25c.

**COMPACT SWORD FERN**—Resembles the Boston, only more dwarf and more erect and darker shade of green gracefully arched. A good house plant. Price, 15c.



Lace Fern



**TEDDY JUNIOR**—New dwarf fern, said to produce nearly four times as many fronds as any other fern introduced; fronds are broad and tapered from base to top. Price, 15c each.

**LACE FERN**—(Asparagus Plumosus)—Graceful bright green leaves of delicate form and unusual beauty. A fine house plant. Thrives under all conditions. The foliage cut and put in water will hold its shape and color for weeks. Price, 15c each.

## PEONIES

Few hardy plants are so suited to any position in the garden or lawn as the Peony. The display of flowers is very effective, rivaling the rose in beauty. A good deep rich soil suits them best with plenty of sun, while they do well in any ordinary soil, once planted, they will last for years. Plant two and one-half inches under ground. If planted deeper will grow, but will not bloom.

**DUCHESS D'ORLEANS**—Medium to large; dark carmine pink guards, center soft pink; fragrant; mid-season; vigorous, tall; a free bloomer. A profitable cut flower; it ships well, can be depended upon for an abundance of flowers year after year. 35c each.

**ZOE CALOT**—Very large; soft pink tinted lilac; fragrant, full globular bloom; mid-season; growth strong; good height; stiff stems; blooms freely. 45c each.

**CANDIDISSIMA**—Large tinged sulphur; becoming white; fragrant; rose type; early; blooms freely. 45c each.

**MIXED PEONIES**—Not a cheap lot of undesirable sorts, but a really first class mixture of good named Peonies, the leading commercial varieties predominating. 35c each; 2 for 65c.

**OLD FASHIONED GARDEN PEONIES** — Pink, white and red. 40c each; 2 for 75c.

### GIANT MOON VINES

Great climber; extra fast grower. Has large, white flowers, which are produced in abundance. This is what you want for porch or window shade. An annual; reaches maturity the first year. Will give you all the shade you are looking for. Price, 10c; \$1.00 per dozen.

### SNAP DRAGON

A border and bedding plant of long blooming season. Long showy spikes of curiously shaped tubular flowers. Many fine colors, mixed. Pot grown plants, 10c each; 80c dozen; 25 for \$1.50. Hot bed plants 20c dozen.

### INDIA RUBBER PLANT

This plant attains a large size and tree shape; has a large, smooth, leatherly leaves; resembling the Magnolia very much. A fine pot plant. Price, 50c each.

# CHRYSANTHEMUMS

(Indoor Variety)

One of the finest flowers growing; the king of all blooming house plants. Flowers will keep a long time after cutting.

**PRICES**—On all the following, 15c each; two for 25c; dozen for \$1.25.

## SPECIAL OFFER

For \$1.00 will send to any address, postpaid, 12 Choice Chrysanthemums, our selection, distinct and different. You will not be disappointed by leaving the selection to us.

## DIRECTIONS FOR CHRYSANTHEMUMS WHICH, IF FOLLOWED, WILL INSURE SUCCESS.

**WHEN TO PLANT**—Any time after the ground can be worked, even up to June 20th. will give you good blooming plants in the fall.

**SOIL**—Dig the ground deep; put in quantities of manure. The Chrysanthemum is a gross feeder; if fed well the flowers will be large and the plant strong.

**DISBUDDING**—If you want large flowers, keep plants pruned and disbudded, leaving only three or four buds, for a real show bloom leave only one.

**WHEN TO LIFT**—In localities subject to heavy frosts in October or November plants should be lifted into large pots or boxes by September 1. After lifting drench thoroughly and never allow them to suffer for water. Give manure water, if possible, once a week. If protected from frost by sheeting, they need not be brought into the house till well into October; and when brought in place in a room without fire; give plenty of air when not frosty. In cold climate winter in cellar.

**Chrysanthemums enemy**—Black Aphis and Mealy Bug.

Keep them sprayed with Shep, Enough Shep to make four gallons of spray, 40c.

## OCTOBER FLOWERING

**BETSY ROSS**—Large, pure white. A very popular variety. Sure to please. One of the largest white on exhibition at fall shows.

**CHIEFTIAN**—A beautiful incurving pink of perfect shape. Perhaps the finest incurved pink commercial variety in cultivation today.

**WHITE CHIEFTIAN**—An ideal incurved white. Fine for cut flowers. We are sure you will be pleased with this beauty.

**ENCHANTRESS**—The color is bright rose-pink of a very even shade.

**CHRYSOLORA**—This fine new variety can be described as a standard yellow; early variety.

**JOSEPHINE FOLEY**—One of the best incurved whites introduced in recent years. Strong in growth and steam. It holds in fine condition for a long time.

## MID-SEASON FLOWERING

**BLACK HAWKS**—Dark and velvety. Very large and hold in fine condition for a long period of time. If you like red, this will be sure to please you.

**WILLIAM TURNER**—This is an incurved variety very large and pure white blooms. One that everyone loves.

**YELLOW WILLIAM TURNER**—One of the brightest yellow Chrysanthemums; a standard variety.

## DECEMBER FLOWERING

**EDWIN SEIDWETZ**—A most beautiful and rich incurved pink. One that you will surely like.

**HARVARD**—Large dark crimson, one of the most beautiful crimsons you have ever seen.

**NAGAYA**—Bright yellow. Can be grown for Thanksgiving or early December. A very popular Chrysanthemum.

## HARDY OUTDOOR

Many "Mum" loving friends ask us for hardy varieties of Chrysanthemums that will live outdoors all winter. To those of our friends who want hardy "Mum," we heartily recommend

this collection. They are quite hardy, and include a beautiful and wide range of colors.

**ADELPHIA**—A beauty. White as snow.

**FIRE BIRD**—The name describes it. Very bright red, strong upright growth.

**CAPTAIN COOK**—One of the most beautiful rose pink you will find anywhere. Not even a tint of lavender. Absolutely rose pink.

**GOLD COIN**—Very large yellow. Don't miss this one for you are sure to like it.

**ILLONA**—Rose lavender, Stiff and upright growth.

# COLEUS

These are all fine for bedding and as specimen pot plants during the winter. They are wonderfully attractive. I do not know of a finer foliage plant than the Coleus. Keep well sprayed with Shep if the white cotton-like bugs should appear in summer. Enough Shep to make four gallons of spray for 40c. Postpaid.

**NEW PRESIDENT HARDING COLEUS**—Bright red leaves, with brown, green-yellow edging. A real beauty. Only 15c; 2 for 25c.

**TRAILING QUEEN**—A free, rapid and easy grower. Elegant fringed leaves, blending from pink to crimson, bordered with chocolate markings. 10c each; three for 25c; 12 for 75c.

**CHRISTMAS GEM**—Very broad leaves; bright crimson, marked with yellow. Sure to please. Price, 15c each; 2 for 25c.

**NEW GIANT RAINBOW (Christmas Queen)**—Long leaf, richly colored. Many colors, ranging from dark velvet to pink, yellow, brown and green. A winner. Price, 15c each; 2 for 25c.

**DEFIANCE**—New; fine leaves, bright yellow, about one-half of surface, in center bright velvety crimson. Price, 15c each; 2 for 25c.

**MANY VARIETIES MIXED**—10c each, 3 for 25c; dozen, 90c.

**HOLLYWOOD RED**—Maroon center with serrated edge of green, gold and bronze, excellent dwarf. New variety.

**JOSEPH COAT**—An intermingling of many colors.

**LORD ALVERSTON**—Extremely beautiful, an odd variety. Large leaf, deep mahogany red with purple sheen.

**BIG TIM**—Large thick leaf variety. Bright cerise red, mottled and spotted maroon, yellow and green.

**SETTING SUN**—Sun-red, bordered bright golden yellow shading to plum.

## CRIMSON LAKE (Bougainvillea)

(Tender Perennial)

One of the most striking vines introduced in years. Great clusters of crinkly, paper like bells in their emerald setting, or an incomparable brilliant crimson color. Price, 35c each; 2 for 60c.

## SANSEVIERIA (Zebra, Snake or Tiger Plant)

Just the plant to grow in sunless windows; dark or heated rooms; will stand almost any amount of neglect, yet holds its thick, fleshy green clouded and sword-like leaves in this graceful position.

15c each

**GOLDEN STRIPED**—(Sansevieria Zeylanica Laurenti)—New, rare decorative plant. This variety in addition to having the green variegations of the ordinary sort has a band of creamy-white on the outer edges of the leaves. Very distinctive and ornamental. Strong plants. 50c and 75c.



## HARDY IVIES

### HARDY IVIES

Boston Ivy, 20c each  
 English Ivy, 15c each  
 Money Ivy, 10c each  
 Ground Ivy, 10c each

**GROUND IVY** — Solid green  
 10c; 3 for 25c.

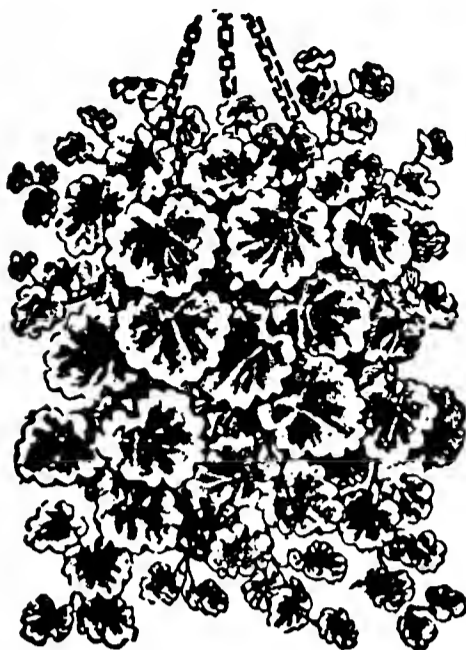
**MONEY IVY**—One of the best  
 Ivies grown; extra fast grower;  
 foliage green and round; leaves  
 are the size of nickels, quarters,  
 half dollars and dollars. The  
 leaf is borne from a stem in the  
 center, giving a parasol effect.  
 A real good one,

Only 10c

### PARLOR IVY (German Ivy)

For hanging baskets; no  
 trouble; extra fast grower.  
 Price 10c each; 3 for 25c.

(Not for outdoor planting)



**VARIGATED GROUND IVY**  
 —Its green leaves are splotted  
 with white.

10c Each.



## Taylor's Hardy Phlox

No class of hardy perennials is more important than the Phlox, which succeed under almost any conditions and flowers from the end of June until late in the fall; and while they will continue in good condition and flower freely for many years without attention, still they are much improved by liberal cultivation. Red, pink, purple, and white, 20c each; 3 for 55c; 6 for \$1.00.

**BEACON**—Tall variety; color, cherry red; a wonderful Phlox.

**ANTONIN MERCIE**—A beautiful lilac; you will make no mistake in buying this one.

**BRIDESMAID**—A very early white variety with red eye.

**OBERGARTNER WITING**—A wonderful variety in pink.

### VINCA VARIGATED

Green and white varigated leaves. Grows rapidly out of doors in summer, and is much used for porch or window boxes and hanging baskets. An attractive trailer. 10c each; 3 for 25c; dozen, 90c.

### CINNAMON VINE BULBS

Beautiful foliage and dainty flowers, highly perfumed; hardy climber. Once planted will last a life time; vines dying down to the ground each autumn, but growing very rapidly each spring. Grows well in the shade or sun, on dry land or wet land. Good sized bulbs, priced at 8c each; three for 20c. Large bulbs, 15c each; 2 for 25c; 6 for 60c; dozen for \$1.00.



**WANDERING JEW**  
 (Tradescantia)

Too well known to need describing. A rapid grower; excellent in hanging baskets, vases or window boxes. Red and green, varigated yellow and green; solid green, pot grown. 10c each; 3 for 25c; one dozen assorted, 75c. Rooted cuttings, 5c each; dozen, 45c.

## MAMMOTH VERBENA

A very popular and useful bedding plant; to keep blooming in best condition, keep all old flowers cut off; a severe clipping will make a better plant. A fine collection of mixed colors. Each, 8c; 3 for 20c; 6 for 35c.

**TRUE BEAUTY OF OXFORD**—The world's best Verbena, cerise red. 10c each; 3 for 25c; 6 for 45c; dozen for 85c.

**GRANDIFLORA ROYALE**—Rich deep royal blue, large creamy eye, enormous size bloom. 10c each; 3 for 25c; 6 for 45c; 12 for 85c.

**PURPLE VERBENA**—Rich deep, very fine, one of the best known varieties. 10c each; 3 for 25c; 6 for 45c; dozen, 85c.

**TRUE PINK BEAUTY OF OXFORD**—Same size bloom as cerise, but a wonderful pink. 10c each; 3 for 25c; 6 for 45c; dozen, 85c.

**GIANTEA ALBA**—Pure white, free bloomer. 10c each.

**NOTICE**—All 10c Verbena, 6 for 45c; 12 for 85c; pot grown, post paid.

### ALTERNATHERAS (Dwarf Coleus)

For borders, carpet gardening and for making letters. Six inches high. Will stand shearing. Leaves dark green with pink and red shading. Price, 5c each; six for 25c; one dozen for 45c.

Same thing with yellow instead of red; same price.

### COMET PLANTS (Acalpha Sandrilli)

Leaves are dark green from the axil of each of which spring a long drooping spike of glowing crimson scarlet, nearly an inch in diameter and from 18 to 24 inches long, very velvety in texture. Exceedingly curious and interesting novelty. Is bound to have a large sale on account of its oddity.

Price, 15c each

2 for 25c







## Caladium Esculentum

### ELEPHANT EARS

A most effective plant for the flower border or for planting upon the lawn. To obtain the best results should be planted in rich soil, well supplied with water. Bulbs will grow nice plants the first season. 10c, 15c and 20c each, according to size.

**ALOCASIA ILLUSTRIS** (Blue Stemmed Elephant's Ear). An excellent plant to grow in connection with fancy leaved Caladium, or for planting in the open. The foliage is dark green. blue stems. Fine pot grown plants, 20c each; 2 for 35c.

### UPRIGHT LEAF CALADIUM

**CALADIUM ARBOREUM**—This fine plant, when young, resembles the Elephant's Ear, but grows to immense size as it attains age. Instead of dying down in the fall this grows into a stem or trunk, which retains the foliage through the winter if kept in warm room. Or you may let the tops die down and store from frost. Plants well cared for will grow to be 8 or 10 feet high. Bulbs, 35c.

### SULTAN'S-IMPATIENS

#### (Zanzibar Balsam)

Almost a constant bloomer. Has blooms about the size of a half dollar. Salmon, pink, white and red. (Give very little water; too much water will rot the plant off). Price, 10c each, 3 for 25c.

### SWORD CACTUS

A large growing plant. Has white flowers about four or five inches in diameter; night blooming. Price, 15c and 25c, according to size. Yes, everything is postpaid.

### CUPHEA (CIGAR PLANT)

Bushy plants of neat habit, about 15 inches high, bearing great numbers of narrow, tubular flowers, bright scarlet, with purple and white tips. Bright and attractive, always in bloom. These plants thrive beautifully in hanging baskets, vases, etc. are also fine as pot plants in the window and good for bedding out of doors. Price, 10c each; 3 for 25c. Pot grown.



### FANCY LEAVED CALADIUMS

They are the most charming conservatory plants. Being of a tropical nature, they like a warm temperature. Their beautiful foliage is variegated in an indescribable manner. One plant will be dotted, another ribbed and veined with pink or scarlet or yellow. Some give a Japanese effect. Has to be seen to be appreciated. They create a sensation wherever grown. Good bulbs, 25c each; 3 for 65c; 6 for \$1.25.

### MADAGASSCAR, PERWINKLE, OR VINCA

Blooms in pots and better for borders or beds. About two feet high; very bushy. The more you plant, the better you like them. Colors, pink, or white. Pot grown plants, 10 each; 6 for 25c; per dozen, 90c.

### AFRICAN MARIGOLD—(Annuals)

These flowering plants are becoming very popular; this particular variety is fine for cut flowers; mixed colors; long blooming season; double. Pot grown plants, 6c each; 6 for 25c; 12 for 45c.

### ARTILLERY PLANT

**PILEA**—Drooping, graceful habit with fern-like foliage. Is covered with very small pods or blooms. Price, 10c; 3 for 25c.



### PANDANUS VEITCH

Graceful curved foliage, light green striped, with broad bands of white. An attractive plant that stands ordinary house culture well, is always fresh and bright in appearance, 25c; 2 for 45c. Pot grown.





## DAHLIA BULBS

DAHLIA BULB PRICES SLASHED

(All Dahlias Postpaid)

Spade or plow the ground to a depth of 10 inches or more; use a liberal amount of well rotted manure; lay bulbs flat and cover to a depth of about five inches; space each way three or four feet. Stake when one foot above ground. Cultivate well.

**BASHFUL GIANT**—Decorative; if you like large blooms try this one. Color apricot with golden shadings. Sure to please. 40c each; 3 for \$1.00.

**PRIDE OF CALIFORNIA**—Deep red, large thick flowers. Good bloomer. Very fine bulbs, 20c each; 2 for 35c; 6 for \$1.00.

**DR. TEVIS**—Decorative—Salmon rose, blending to old gold and apricot. Extra fine. 35c each; 2 for 60c; 4 for \$1.00.

**BILLIONAIRE**—Very, very large; orange yellow. Price, 50c each; 2 for 95c; 6 for \$2.50.

**DARLENE**—Blooms early to late in hot or dry weather. Good keeper. Long yielder, medium size; shell pink. 25c each; 2 for 45c.

**JERSEY BEAUTY**—A perfect bloom; long stems. Free bloomer, popular for cut flowers, beautiful deep clear rose pink. 25c each; 2 for 45c; 6 for \$1.25.

**MRS. CARL SOLBACH**—Very large lavender pink, long stems; fine for cut flowers. 35c each; 2 for 65c; 6 for \$1.80.

**MAUD ADAMS**—An early and fall bloomer and very dainty; white tained with lavender. 18c each; 2 for 35c; 6 for 95c.

**QUEEN VICTORIA**—Pure Golden yellow. 15c each; 2 for 25c; \$1.00 per dozen.

**PENELOPE**—White overlaid lavender. An old standard. Has compact clumps. 15c each; two for 25c; 3 for 35c; 6 for 65c.

**JACK ROSE**—Red. The identical shade of the rose with the same name. 15c each; 2 for 25c; 6 for 65c; 12 for \$1.15.

**MAURICE RIVIORE**—(Collerette). Color is purple to red with a pure white collar. 15c each; 2 for 25c; 6 for 60c; 12 for \$1.00.

**SAGAMORE**—(Decorative). A superb cut-flower; of pleasing size, high-built center, erect stems. Profuse bloom of long season and long keeping, both outdoors and in water. The coloring is magnificent, apparently absorbing the autumn tints of its season. Soft saffron yellow with a faint rose undertone at base, the compact center enriched by ruddy apricot. The varying expressions of sideview or full front, sunshine, or lamplight, give equal pleasure.

**JANE COWL**—(Decorative)—A wonderful exhibition type, open-faced, deep massive; a delightful expression of golden yellow, clouding with a suffusion of chamois and orange pink to the pronounced center of ruddy apricot. 75c each; 2 for \$1.40.

**SANHICANS BLUEBIRD**—Decorative—Magnificent broad flowers; unfading rich violet blue. Price, 65c each; 2 for \$1.15.

**HEART OF GOLD**—HC.—Large pink and yellow, with a sulphur yellow center. Vigorous growth. Price, 45c each; 2 for 85c.

**F. L. BASSETT**—This Dahlia will produce more blooms than any Dahlia you ever saw. Deep lavender or purple, stems 18 inches long. The first to bloom and always in demand, it is and bright foliage. This Dahlia should be out regularly, every day. 15c each; 2 for 25c; 6 for 65c.

**DEE LIGHTED**—The largest white Dahlia, with immense double blooms six inches across; instead of centers being round they are elongated in such a way that it suggests a smile. "The Teddy Roosevelt smile". This Dahlia should be pinched back when one foot high. A surprise for any garden and will give satisfaction; also a good bulb producer and easy to keep over the winter. 20c each; two for 35c; 3 for 50c; 12 for \$1.65.

**FLORAL PARK JEWELL**—Extra long stems and free blooming; variegated red tipped white. 10c each; 12 for 90c.

**SYLVIA**—Pink with white center. 15c each; 2 for 25c; 3 for 35c; 12 for \$1.10.

**MRS. HARTONG**—(Decorative). A new color in Dahlias, being fawn color throughout. 20c each, 2 for 35c; 3 for 50c; 6 for 95c.

**ARRABELLIA**—(Show)—Yellow edged pink, A strong bloomer and fine for cut flowers, 25c each; 2 for 45c; 6 for \$1.00; 12 for \$1.95.

**MRS. I. DE. VER WARNER**—(Decorative—Mauve-pink, impressive on account of its size and beautiful orchid color, and abundant bloomer. This is an extra fine, lone stemmed. One that will be a surprise to all. 30c each; 2 for 50c; 6 for \$1.25; 12 for \$2.00.

**SPECIAL**—A fine lot of mixed Dahlias, 12c each; 2 for 20c; 6 for 55c; per dozen 90c.

### FRENCH HYDRANGEAS

These plants are adapted for pot culture or for the garden in summer only. By thoroughly mixing one-half pound alum to one-half bushel of soil to pot them in, they will bloom blue.

**MAD. CHOUTARD**—Pretty bright rose; a fine variety to convert to blue. 20c each; 3 for 50c.

**MAD. AUGUSTA NONIN**—Very large early pink. 20c each; 3 for 50c.

**PRESIDENT FALLIERS**—Very delicate rose pink. Try blueing this. To make these Hydrangeas bloom blue, put one-half pound of alum, broken into pieces about the size of a hickory nut, with each bushel of soil. Price, 20c each; 3 for 50c.

**RADIANT**—Large clusters of rosy amber, changing to bright pink. Quite a distinct color and very beautiful. Price, 20c each; 3 for 50c.

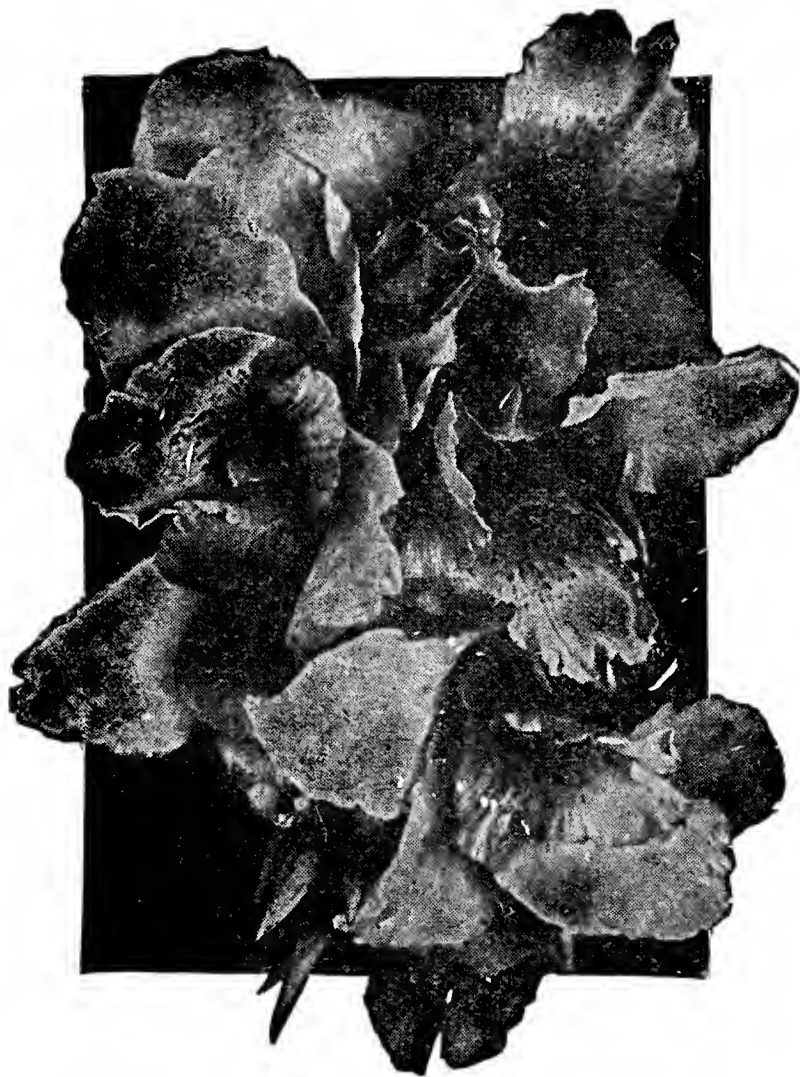
**GEN. DE VIBRAGE**—Large; bright rose flowers; a fine variety and very popular. In order to move them, will sell nice plants at 20c each.

**EMIL MOULIN**—One of the finest sorts; very large flowers; pure white, with rose carmine eye, and only 20c each.

**MOUSSELINE**—Mauve-rose cream colored center. Often comes darker. 20c.

**OTASKA**—A well known favorite plant producing large heads of pink flowers in great profusion. Price, 20c.

**N. B.**—All thrive in a shaded situation with a plentiful supply of water.



## CHOICE CANNAS

(All Cannas Postpaid)

The greatest of all bedding plants, of quick growth and tropical appearance. Will bloom first year from early until frost. They do best in rich soil with plenty of water. Do not plant in the open until danger of frost is past. Do not plant too deep. The eyes should be barely covered. We do not send out anything but strong two or three-eye roots.

Most varieties should be dug after frost and stored in box of soil where they will keep dry and not freeze.

No home should be complete without at least a few cannas. They increase rapidly. Buy a few now. In two or three years you will have them to sell.

**CANNA MRS. PIERRE DU PONT**—Wonderful new ruffled rose-pink, magnificent blooms, green leaves, medium height. Best of pink cannas. This new canna has been selling for 75c to \$1.00 each. Our price only 40c; 2 for 75c; dozen, \$4.00.

**CITY OF PORTLAND**—3 feet; deep pink foliage green; a new variety, sure to please. Flowers are produced in greatest profusion on strong erect branching stalks, bloom equally well in hot or cold weather. Is one among the best. 15c each; 3 for 40c; 6 for 75c; dozen, \$1.40.

**WYOMING**—5 feet; flowers large, bright orange, slightly rimmed and flaked with rose; leaves rich purplish bronze. Price, 15c each; 2 for 25c; 6 for 70c; dozen, \$1.35.

**GAIETY**—5 feet; reddish orange, mottled with carmine; the tongue is yellow and densely spotted with carmine. Price, 15c; 2 for 25c; 6 for 70c; 12 for \$1.25.

**WINTZER'S COLOSSAL**—The color is a striking vivid scarlet that retains its brilliancy over a long period. A most showy flower of enormous size with large and broad petals. A strong grower; height, 5 feet. Price, 10c each; 6 for 50c; 12 for 90c; 100 for \$6.00.

**THE AMBASSADOR**—Brilliant cherry-red flowers in magnificent large trusses, forming a showy contrast to the rich bronze leaves. Grows about 5 feet tall. Price, 15c each; 2 for 25c; 6 for 65c.

**PRESIDENT**—(New)—5 feet; flowers extra large, red, high quality; flower stalks strong, holding the flower well above the foliage. Our price, only 15c each; 2 for 25c; 6 for 65c; dozen for \$1.00.

**APRICOT**—(4 ft) Broadly compact trusses, freely produced. Strong apricot passing to silver pink, with gold and coral center. Price, 15c each; 2 for 25c; 6 for 65c.

**HUNGARIA**—(3½ to 4 ft) The first popular pink bedder; bright "Neyron Rose" pink, the throat prettily mottled. Price, 15c each; 2 for 25c; 6 for 65c.

**VENUS**—4 to 5 feet; an exceedingly beautiful variety; variegated rose pink, mottled near center, edge with creamy white; vigorous and long seasoned; one you will like; green foliage. Price, only 15c each; 2 for 25c; 6 for 65c; dozen for \$1.25.

**EUREKA**—4½ feet; one of the best cream white cannas grown; robust, quick grower, free bloomer; a few placed in bed with red add much to the appearance. Try it and be convinced. Price, only 15c each; 2 for 25c; 6 for 70c; dozen, \$1.35.

**ALEMANNIAS**—5 feet; orange, mixed with scarlet; an old variety; a hardy grower. Price, 10c each; 3 for 25c; 6 for 45c; dozen, 85c.

**MME. CROZY (New)**—The flowers are borne erect in great heads in such profusion that they crown the plant with a blaze of vermillion, scarlet, bordered with deep golden yellow. Very popular. 15c each; 2 for 25c; 6 for 70c; dozen, \$1.25.

**U. S. CANNA**—A good red Canna, green foliage. Grows about five feet tall. Price, 10c; 3 for 25c.

**YELLOW KING HUMBERT—Queen Helen**—Four to five feet; flowers rich, clear canary yellow; crimson spots in center; very large; green foliage. Price, 10c each; 3 for 25c.

**SPECIAL**—10 varieties all different. Our selection for \$1.25.

**MIXED**—No name or color given. 6 for 40c; 12 for 75c.



UMBRELLA PLANT

Should be grown in bucket half full of rich soil, then filled with about two inches of water. Always fresh, green and attractive. Stems grow two feet high, surrounded by whirls of leaves. (May be grown in pots, if well watered). Price, 10c; 12 for 90c. Fine for fish ponds.



## FREE BLOOMING LANTANA

Tender Perennial

Surely you will want to try a few Lantanas this season. They are free and continuous bloomers, stand heat and drouth well, when bedding out; fine for growing in pots for specimen plants; can be wintered in a light cellar. Price, postpaid, each, 15c; 2 for 25c; 12 for \$1.25. Pot grown.

**RADIATION**—A great bloomer; opens orange yellow, changing to brilliant red.

**A. COOK**—Opens deep orange, changes to a bright rose.

**SUNSET**—Opens deep orange red, changing to crimson.

**PINK BEAUTY**—Silvery rose, yellow center.

**VIOLET**—Yellow and pink, golden center; changing to pink orange, then to a beautiful violet.

**GOLDEN PLUME**—Gold and yellow; one you will like.

**JACOB SCHULTZ**—Immense size; open golden yellow, changing to orange yellow. A beauty

**WEeping LANTANA**—Weeping plant of great beauty. The plant has a most graceful, drooping habit; grows very rapidly and blooms continually, summer and winter, producing large clusters of flowers of the most delicate lilac. Foliage dark green. 15c each; 2 for 25c.

Grow a few Lantanas this year and you will want many more next year.

### OTAHEITE ORANGE

A fine pot plant; glossy green leaves; blossoms very fragrant; fine plants for 20c each. Pot grown. Small pot plants will fruit.

### LADY FINGER

A moss-like plant, thick green, long round leaves, beautiful red flowers. Good for box or basket. Price, 10c; 3 for 25c; dozen for 90c.

### RUSSELLIA ELEGANTISSIMA

Especially fine for hanging baskets, window boxes. Covered with coral red flowers. Price, 10c; 3 for 25c.

### LATHYRUS (Perennial Sweet Peas)

These perennial Peas, although lacking fragrance, are very valuable because they will last indefinitely. The vines grow from 8 to 10 feet long. Cut flowers good for funeral work. Blooming plants. 15c each; 2 for 25c; 12 for \$1.25.

### PHLOX DRUMMONDI

A hardy, much liked annual, unequalled in the fine display of their many and brilliant colored flowers, of easiest culture; bloom profusely through a long season; for beds or borders. Plants from hot beds, 20c per dozen; pot grown, 5c each; mixed colors.



## IRIS

Very beautiful bloom; easy to grow under most any condition; plant in early spring or fall. Price, 10c each; 3 for 25c.

**CRIMSON KING**—Rich clear purple; a very good variety; Height, 24 inches.

**QUEEN OF MAY**—Lilac pink; large; a mid-season variety. Height, 30 inches.

**SARHO**—Standards lavender purple, falls dark reddish purple; fragrant; very early.

**FLAVENSENS**—A beautiful shade of canary yellow; one of the tall varieties.

**CELESTE**—A sure blue, slightly deeper; falls very large blooms. Height, 24 inches.

Mixed colors, 10c each; 3 for 25c; 12 for 85c.

## Ponderosa Lemon

Easily grown in pots. Fruits eight or ten times the size of ordinary lemons, and makes as good or better lemonade. Can be used for anything that ordinary lemons are used for. Everbearing; blooms very fragrant. Will begin fruiting at two years old. Nice plants, 20c; larger plants, 45c. Pot grown.

A great novelty, will surprise your friends.

### PANSIES

Plants should be planted out very early in the spring. Fine, large flowers; use one-half well rotted manure and one-half soil. We have a fine mixture of good plants. Price, 5c each; 6 for 25c; Pot grown.

### ANTIGNON LEPTOPUS (Mountain Rose)

A lovely, fast growing climber with beautiful rose colored flowers in racemes two feet long. The profusion of blooms is such as to give the resemblance of a rose. Fine for covering porches and trellises. Lift roots in fall, store away from frost. Two years old roots. Price, 25c.

### EUPHORBIA MARGONITO (Snow on the Mountain)

Easy to grow in any location or soil, two to four feet high; foliage, a light green, margined with silvery white; gives the effect of snow on the mountain; once planted will seed itself for each season. Pot grown plants, 5c; 6 for 25c; hot bed plants, 20c.

### PLUMBAGO

A very beautiful pot plant; a constant bloomer; flower sky blue. Price, 15c each; 2 for 25c.

### JAPANESE KUDZA ZINE

This is the most rapid growing vine anyone knows of. By measurement it has been known to grow 30 feet in one week. The foliage is large and tropical. It is entirely hardy. Price, 20c each, two for 35c.

### ACALPHA—(Fire Dragon)

Rich and beautiful mottled and blotched with crimson or green background; the summer heat has no effect on its markings. If you haven't this in your collection, order one or more; it is a beautiful plant. 15c each; 2 for 25c.

### ICE PLANT

A trailing plant for hanging baskets or the garden. Foliage very thick and shiny. Appears as though covered with ice crystals. Small red blooms. Price, 8c each; 2 for 15c.

### VELVET PLANT

A beautiful plant. Leaves and stems of a velvety nature, shining and glistening, reflecting many new colors which seem to change as plant is moved. Pot grown. Price, 15c; 2 for 25c.

### CALLIA LILY

Beautiful large green leaves. Flowers large and held high on stiff stems; blooms creamy white. Price, pot grown, 15c, 25c and 40c each.

### AMARYLLIS JOHNSONII

Tall spikes, crowned with several large blooms; salmon red color, one of the finest plants we know of. Small, 15c; blooming size, 40c to 50c.

### ASTER (ANNUAL)

Early and profuse bloomer. Wide range of colors, mixed. Plants compact or branching habit, 16 to 18 inches high; fine for cut flowers. Price, 10c; 3 for 25c.

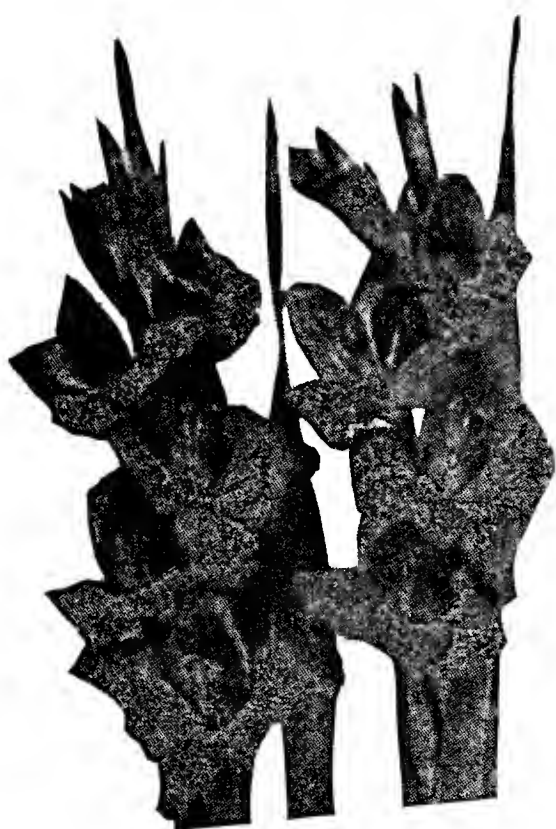
**COLUMBINES**—Double Mixed—A first rate cut flower. Price, 15c; 2 for 25c; 12 for \$1.25.

**CALENDULAS**—Produces abundantly. Large beautifully imbricated, very double flowers; pot grown plants, 5c; 6 for 25c; 12 for 45c.

**MARGERETE DAISY**—Pure white flowers. About the size of a dollar. Price, 10c; 3 for 25c.

# TAYLOR'S GLADIOLUS WILL MAKE YOU GLAD

NOTICE THE REDUCED PRICES THIS SEASON



The Gladiola deserves a good place in every garden, small or large. Easy culture and fine for bedding. Excellent for cut flowers. Plant any time from April 1 to July, in sunny places, six inches each way, four inches deep, and stake. After frost, lift the bulbs or uncover, remove the roots, store in a dry place away from frost. Plant out again next spring.

Begin planting early and make a planting every two weeks until July 1 for a continuation of flowers. This should give you flowers all summer and until frost.

Price of all Gladiolus listed, unless otherwise stated, your selection, 1 for 6c; 6 of one kind, 30c; 12 one kind, 50c; 25 for \$1.00; 50 for \$1.85; 100 for \$3.50; postpaid. For 50 or over you may select 25 of a kind.

**LOUISE**—Orchid lavender with deeper blotch in the throat, a dainty combination.

**MRS. FRANCIS KING**—A most beautiful flame of pink. Large flowers. Plant in abundance.

**AMERICA**—Stands among the best. Large beautiful flesh pink. Will last long time after being cut. A high grade Gladiola.

**ANNA EBERIUS**—Dark velvety purple, throat deeper.

**GOLDEN MEASURE**—Large, thick flowers in heavy upright spikes; orange yellow with gold blotch on lower petal; exterior base rose pink. Deepest, largest good yellow.

**GOLDEN DREAM**—A golden dream come true. As deeply, richly golden as souvenir, but much larger.

**ROSE ASH**—(Ashes of Roses)—A beautiful blend of old rose, gray, pink and red. Unique and delightful.

**GIANT NYMPH**—LaFrance pink, with creamy yellow throat powdered scarlet. New variety of great size, perfect arrangement and long spike.

**PEACE**—Flowers are long, heavy, straight, spike; a beautiful white, with pale lilac markings.

**TOPAZ**—Very fine salmon buff, Sure to please.

**HALLEY**—One of the earliest of all Gladiolus to come into bloom. Color a delicate rose with a white blotch.

**EVELYN KIRTLAND**—An outstanding variety of luminous coral pink, shaded with deep pink on the lower petals. Strong spikes. A winner.

**WAR**—Deep blood red, shaded crimson black; flowers very large; borne freely; late.

**LEMARECHAL FOSH**—A great novelty; a lily like flower of salmon pink, with blood red blotches. One among the very finest. A leader.

**WILBRINK**—Lovely flesh pink with orange blotch on lower petals.

**MRS. FRANK PENDLETON, JR.**—A lovely salmon pink, having red blood blotches in the throat.

**ALICE TIPLADY**—Orange saffron, flamed red. A real good Gladiola.

**SCHWABEN**—One of the newer of the yellow varieties; magnificent cut flower. The flowers all open nearly at the same time. A real beauty.

**GRETCHEN ZANG**—A free-blooming soft pink emerging into scarlet on lower petals.

**1910**—Rose, almost red; a real good Gladiola that will please you. This is one among the best. Very fine for cut flowers. Plant heavy with this one.

**HERADA**—Good spike, with large wide open blooms, of a bright glistening mauve color; must be seen to be appreciated. Hard to beat.

**E. J. SHAYLOR**—This is one we have tried and found all that was claimed for it. Same color as 1910, but is ruffled. A beauty. Very fine.

**MARY PICKFORD**—Color creamy white; throat soft sulphur yellow.

**FLORA**—Beautiful, canary, with scarcely any markings. Considered the best yellow.

**CRIMSON GLOW**—Velvety crimson. A leading red.

## Extra Special

A mixture of many kinds, no name or color given; good bulbs. Only 5c each; 7 for 25c; dozen for 30c; 2 dozen for 75c; 50 for \$1.00; 100 for \$1.95.

## CARNATIONS

(The Popular National Flower)

Red, white, rose pink and shell pink. Wonderful as a cut flower because of their long keeping quality. Can be planted in the garden after danger of frost is past. About 12 inches apart. Soil should be good. Nice pot grown plants 15c each; 2 for 25c; 12 for \$1.25.

### OLEANDERS

An old time favorite for porch or lawn decoration. Give rich soil and plenty of water in growing season. May be wintered any place that does not freeze. Pink or white. State color. Price, 20c each. Leaves and stem are poison if taken in mouth.

### PETUNIAS

**LARGE, DOUBLE FRINGED**—A variety of colors. Price, 10c. A great seller.

**RUFFLED MONSTER**—This Petunia is one of the largest in existence. Several colors, mixed. 15c each; 2 for 25c.

### DOUBLE GIANT ZENIAS

Hardy annual; begins to bloom early and continues until frost; fine lasting cut flowers; long stems; a real favorite; new; double giant flowers. Price, pot grown, 5c each; 12 for 45c; from beds, 15c dozen; 2 dozen, 25c.



**DOUBLE YELLOW HEAD PARROT**—The voice is soft and melodious. The birds prove ideal talkers, whistles and sings. Often imitates a voice from a phonograph record. Gorgeous bird measures 11 to 14 inches in length is a dark green color, with bright red and some blue feathers on the edge of wings and tail. Top of head is bright yellow. Has very showy appearance. Price, f. o. b., Russellville, \$14.75.



**MEXICAN READ HEAD**—These birds may be called the Pets of the Parrot family. Quiet, gentle, easily handled by anyone. Resembles the double yellow heads in general color, being a lively shade of green and head is red. Price, \$12.50 each, f. o. b., Russellville.

We do not carry these birds in stock, but can have them on short notice. Also write for prices on Canary Birds, Love Birds and other kinds of Parrots, Monkeys, Rabbits, Guinea Pigs, Persian Kittens.

#### BIRD BATH NO. 1

This is a real beauty, stands 27 inches high, made of Pottery, color burnt wood. Bowl 17 inches across with perch for birds on top ready to connect to city water, if desired. \$8.50, delivered.

#### BIRD BATH NO. 2

Made of Pottery 24 inches high, 17 inches in diameter. Burnt wood color. No perch and no water connection. Price, delivered, \$5.50.

#### BIRD BATH NO. 3

Made of sheet metal, enameled white, 28 inches high, 19 inches in diameter. Price, delivered to you, \$2.95.

Prices on concrete bird baths and flower vases on request.

#### FIVE HUNDRED DOLLARS PER YEAR RAISING CANARIES

This is the title of a 16 page book, 6x9 inches, which tells about raising, breeding and caring for Canaries, selecting stock, diseases, remedies, and food. Only 35c.

**NEW SUZANNE GERANIUM**—Thrifty grower, large red balls of blooms; free bloomer; price, 15c each; three for 40c; six for 75c; twelve for \$1.25; postpaid.

**BEDDER GERANIUM**—For bedding out this one cannot be beat. Red, shaded with salmon. Price, 15c; three for 40c; six for 75c; twelve for \$1.25; postpaid.

**CLEMATIS PANICULTA**—Star shaped, creamy white color, fragrant; a good climbing vine and hardy; 20c each; postpaid. Large clumps, 50c each; 2 for 90c.



**CRASSULA ARBORESCENS**

**NEW CHINESE JADE PLANT**—from China, the Land of Floral Wonders—This unusual and attractive novelty came from China where so many of today's most wonderful plants came from. It is a form of Crassula. The leaves are thick, waxy-like and of a rich bright green color. Unequaled for window or table as well as out of doors in summer. Easily grown and stands the dry air of the living room without injury. Especially suited for indoor rock and miniature gardens. The distinctive foliage with fleshy leaves about 2 inches long, make a neat and distinctive ornamental plant. Care should be used in watering, as it requires but little moisture. Nice plants, 15c; large plants, 30c.



**ROYAL PURPLE PLANT**

The leaves are beautiful variegated with a very deep purple; for beds and borders; also a fine pot plant. Pot grown. 15c each; two for 25c.

**VIGORO**—12 oz., 15c; 2 for 25c; Postpaid.

5 lb. package, 60c; postpaid.

100 lb. sack, freight paid, \$5.00

The 100 lb. sacks are shipped direct from St. Louis.

# VIGORO

*Specially prepared plant food*



## ACQUATIC PLANTS

### FOR THE LILY POOL

**WATER HYACINTHS**—Fill bowl about half full of good soil. Pour in water until it will stand two or three inches deep. Place the lower roots in soil and let plants float in water. Has fine blooms, borne on spike of bluish color. Fine for fish bowls or outside pools. Will grow fine floating on top of water but will not bloom so well unless roots reach soil. Price, 15c; 2 for 25c.

**HARDY WATER LILIES** — Hardy Water Lilies are easy to plant, but it must be noted that they are to be set horizontally and not be put in up and down or they will very likely fail to start. Just press them into the ground, covering them with an inch of soil so they will not float away and scrape the soil away from off the growing end. The soil should be well firmed around them. An inch of sand or gravel put on the box after they have been planted will help to keep the water clear and prevent the goldfish from rooting in the mud. A few days after planting if the water becomes dark and discolored from the fertilizer used, it will be well to drain the water off and fill up with fresh. In our own pools we always do this and recommend it particularly for small pools. We think it the most essential thing in establishing a pool. 25c each; 2 for 45c.

**BLUE GIANT**—Flowers of largest type of rich blue; free bloomer and continuous flowers. This Lily will brighten your pool. Price, \$2.00 each.

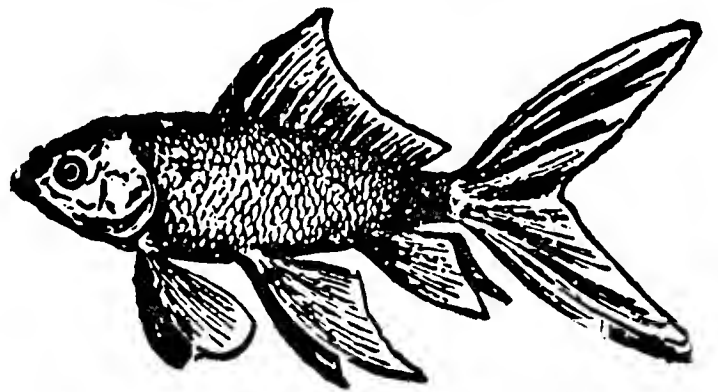
**PINK OPAL**—Exquisite deep rich pink; flowers of interesting form. It presents an appearance quite unique and decidedly attractive. Excellent as a cut flower. Price, \$2.00 each.

**ROSE AREY**—The bright cerise flowers are very large, up to eight inches in diameter; very sweetly scented, with pointed petals, giving effect of dark shades near the edge. Free flowering and of strong growth. This Lily is of exceptional beauty. Price, \$2.00 each.

**PARROT FEATHER**—Quite successful when planted in a tub or water tight hanging basket. The growth soon goes over the edge in the form of soft trailing sprays. Price 10c; 3 for 25c.

**UMBRELLA PLANT**—Should be grown in pot half full of rich soil, then filled with about two inches of water. Just the plant for your fish pool. As it gives shade for the fish. Always fresh, green and attractive. Stems grow two feet high, surrounded by whirls of leaves. Price, 10c each; \$1.00 per dozen.

## GOLD FISH



The interest in keeping Gold Fish is constantly increasing. Gold Fish are kept in many thousands of homes in all parts of the country. They are interesting and entertaining, the bowls of water are healthful in the room. An outside pool with fish is admired by the young and old alike. Will live in outside pool all winter.

We are able to offer our trade splendid variety of Gold Fish at the following prices:

1½ to 2 inch fish, each 15c; per dozen \$1.25  
2½ to 3 inch fish, each 20c; per dozen \$1.75  
3 to 3½ inch fish, each, 25c; per dozen \$2.25

### SHUBUNKINS GOLD FISH

The newest variety of Gold Fish; often scaleless, and is distinguished by patches of red, black and blue against the pearl background. No two are alike in color markings. Certainly they belong in every fine Gold Fish display, whether indoors or fountain or pool. These fish will live in outside pool the year around. If the water freezes over, just keep the ice broken so they can get air occasionally.

2 inch size, 20c each; 12 for \$1.95  
2 to 2½ inch size, 25c; 12 for \$2.25

All fish must be sent by express. Less than one dozen sent collect. One dozen or more sent prepaid.

### PREPARED FISH FOOD

Will not sour in the water. 10c per box; three boxes for 25c; postpaid.

### PEARL CHIPS FOR FISH BOWL

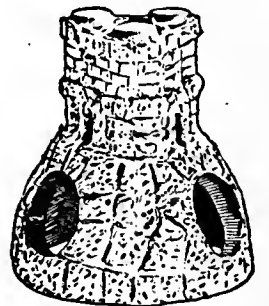
Bright colored pearly chips, just the thing to brighten and give color to your fish bowls. Price, 15c per lb; postpaid.

### FISH BOWLS

We have two styles in clear glass Fish Bowls—squat globe, and the drum shape globe, in the following sizes and prices, either style:

½ Gallon Bowl.....	30c
1 Gallon Bowl.....	60c
2 Gallon Bowl.....	\$1.00

Express collect; if ordered with one dozen or more fish we will prepay.



### CASTLES FOR FISH BOWLS

Very ornamental; three-inch size, 20c; four-inch size, 25c. Assorted Styles.

### THREE IN ONE

Help yourself, your neighbor, and Taylor!

By getting your neighbor to order with you—sell Fish to your neighbor at single order rates, you can save the express and you can get your fish at dozen rates prepaid. The difference will pay you for yours.

### THE CARE AND KEEPING OF GOLD FISH

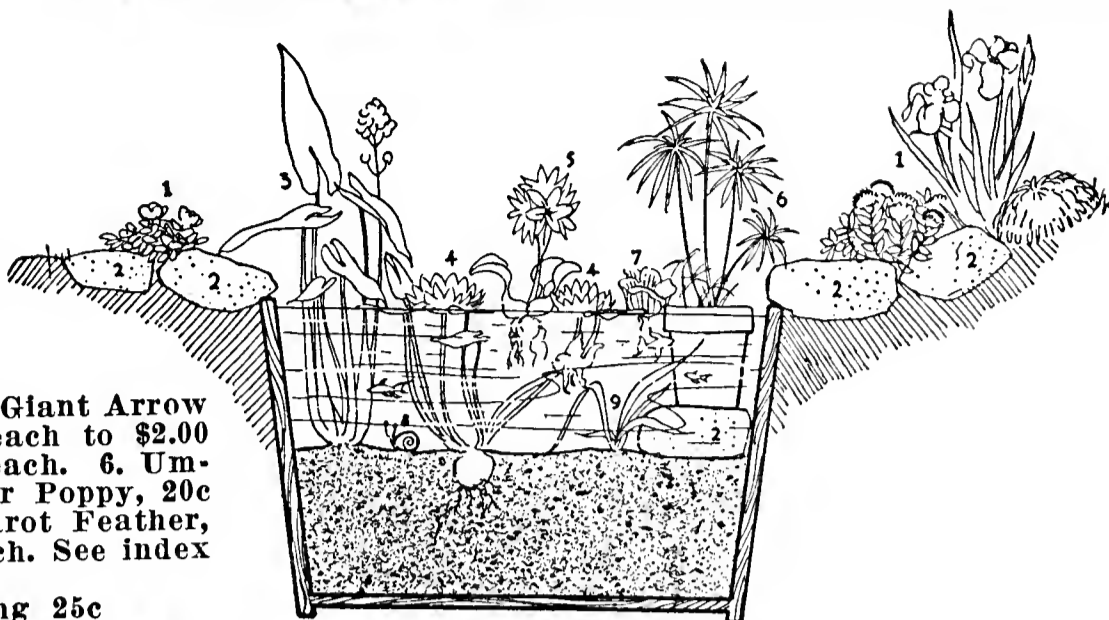
"Acquaria" is a 62-page book, telling in plain language all about the care and keeping and breeding of Gold Fish. If you grow fish this book will be interesting and helpful; treats on over 100 subject pertaining to fish culture. The Price, postpaid, 45c.

## TUB GARDEN

The best effect will be gained by sinking the tub in the ground right up to the rim. Fill the tub half full of rich soil, cover this with half an inch of clean sand and fill with water. The little "pool" is now ready for the water lilies, aquatics and perennials, rock plants and fish. The drawing shows a cross section of a tub garden with plants and water lilies as follows:

1. Alyssum, 5c each. 2. Rock. 3. Giant Arrow 25c each. 4. Water Lily, 25c each to \$2.00 each. 5. Water Hyacinth, 15c each. 6. Umbrella Plant, 10c each. 7. Water Poppy, 20c each. 8. Snail, 10c each. 9. Parot Feather, 10c each. Iris, right side, 10c each. See index for above plants.

ABOVE COLLECTION, including 25c Water Lily For ..... \$1.00



## SALVIA

(SCARLET SAGE)

Salvia are easily grown. Set in open after danger of frosts is past. Plant freely in beds or borders about 18 inches apart. Very fine for foundation planting. Salvia makes a fine background. Pinch young plants back to make them bunch out. They are sure to more than please. Plants ready March 20.

**SALVIA SPLENDEUS**—One of the most popular plants through the summer and fall. Plants grow to a height of three feet; covered with scarlet flowers. Price, not pot grown, one dozen, 20c; two dozen, 35c; four dozen, 65c. Pot grown, 5c each; 6 for 25c; 12 for 45c; 100 for \$4.00.

**DUSTY MILLER**—This plant is used for edging beds of Salvia, Cannas, Coleus, Geraniums, etc. Almost too well known to need a description. Silver white leaves. Price, 10c each; 3 for 25c; 12 for 85c.

### BRAZILLIAN PLUME PLANT (Justica Carnea)

This is a good plant, blooming profusely commencing to flower when young; strong and rapid grower and throws long shoots, each of which is tipped with a plume-like flower. Color, pink. 20c, 2 for 35c.

### AGERATUM

Blue perfection for masing, bedding, edging or potting; beautiful blue flowers in abundance. Price, 10c; 3 for 25c; dozen, 75c.

### BANANA ORINGO

An interesting plant to grow. Planted in the spring in a sunny, well watered location will grow first season to a height of 10 to 12 feet. Leaves about six feet long. A great novelty to see growing. Very ornamental. Two-year-old plants, sometimes produces a bunch of bananas. We always have several bunches of bananas growing in our yard. Good plants, 50c and \$1.00. Store in cellar over winter; will keep without sun or water, if away from frost.

### HIBISCUS

Where can we find a more striking plant for summer or winter? It is always budding or blooming. Hibiscus in pots are extra fine for the porch or balcony, or for bedding out in summer. Tender Perennial.

**PEACH BLOW**—The flowers are double and from four to five inches in diameter, of a rich, clear pink with small deep crimson center. Very beautiful. 15c each; 2 for 25c; large size, 40c each; pot grown.

**RUBIA**—Has large double flowers of a deep crimson color. This is one you will appreciate. Pot grown. 15c each; 2 for 25c.

**LAMBERTH**—Flowers large, deep crimson color. The finest and most brilliant double, crimson, with flowers 4 inches in diameter.

### DARLINGTONIA

#### SNAKE HEADED, FLESH EATING PLANT

One of the queerest and most fascinating plants known to man. It resembles the hooded cobra of the jungles of India, and is one of the few carnivorous plants known to science.

The plant has no leaves, the stalks are twisted and funnel shape, small at the bottom, growing larger with a rounded hood at the top from which hang two crimson and green appendages which have the appearance of feelers or whiskers, is of striking aspect and beautiful in coloring.

The top of the hood is beautifully mottled by white translucent areas through which the interior is lighted. Both hood and appendages bear many honey glands, the excretion from which tempts bugs, flies, in fact all kinds of insects toward the mouth, an orifice on the under side of the hood, and are lured inside the funnel-like stem from which they can not come back, as the stem is lined with ennumerable little hair-like prongs all pointing downward, and once they get below a few of these points they have to continue on downward where they are absorbed in the digestive fluid or liquid in the bottom of the stem.

The Darlingtonia is a perennial plant, growing year after year and can be grown as a house plant in pots using sandy soil and leaf mould. They do best outside in a shaded position, where they require very little care, but should never be allowed to become dry. They blossom in the spring, having a beautiful purple flower.

If kept in a room free from all insects, it is advisable once or twice weekly to place a few small particles of raw beef, about the size of a grain of wheat, in the orifice for its nourishment; however, if placed where there are other plants in the average room, a sufficient number of insects will be attracted from them, making artificial feeding unnecessary.

Plants shipped prepaid, anywhere in the United States, at \$1.00 each; 3 for \$2.50. See front cover.

### SANDERINA

Large bell shaped flowers of lilac rose, born profusely in terminal clusters all over the plant; blooms when quite small. Nice pot plants. 25c each; two for 45c.

### CAPE JASMINE

Pure white, flowers very fragrant, measuring two and one-half inches across. Treat as a pot plant if planted out; will need some protection in winter. Pot grown. Price, 20c.

### TRAILING VELVET PLANT

Of bushy, spreading habit. Olive green leaves; trumpet shaped flowers; rosy lavender color. Pot grown. Price, 10c each.

### HELIOTROPES

Very fragrant, a fine bedder in summer; also a good pot plant for winter use and a great bloomer; 10c; three for 25c.



# THE VOGUE OF OLD-FASHIONED FLOWERS

ROOTS LIVE IN THE OPEN THROUGH WINTER

Today, more than ever before, lovers of flowers everywhere are seeking for their gardens the better forms of these "Old-Fashioned Flowers of Grandmoher's Days." New and rare types continue to appear from various sources. Both here and from foreign countries. Not pot grown. Blooming size plants.

## HARDY HIBISCUS (Mallow)

Grows four to six inches high, large flowers; tops die in fall, sprout up each spring; mixed colors. 15c each.

## HARDY WHITE HIBISCUS

Tall, free flowering, perfectly hardy; color white, with deep crimson center. 25c each; 2 for 45c.

## HARDY PINK HIBISCUS

Similar to the hardy white Hibiscus, but the flowers are of a pink, very striking. 25c each; 2 for 45c.

## HARDY CRIMSON HIBISCUS

Immense striking deep crimson flowers; nothing with as much merit has been introduced in recent years. Price 25c; 2 for 45c.

## BLEEDING HEARTS (Dicentra Spectabilis)

These pretty spring bloomers with their graceful, drooping sprays of heart-shaped pink and white flowers. Are very ornamental; and bloom early in season. Blooming size, 25c each; two-year-old plants, 60c; 2 for \$1.00.



## YUCCA (Adam's Needle)

A very effective and striking hardy plant; will grow on high, dry banks or on the lawn. Good for the rockery; sword-like evergreen foilage. Creamy white flowers, borne on tall stems. 15c, 25c and 50c each.

## DELPHINUM

These hardy plants belong in every garden. Few perennials make such a fine show during spring and early summer, and in cooler sections the plants keep on blooming for many months. They are excellent for cutting. Set the plans four feet apart, so that they can develop freely. During severe winter weather cover with course straw or leaves.

**BELLADONNA**—A magnificent sort with spikes of the most delicate turquoise-blue. Make up prettily with Baby's Breath for a mist flower, July till frost. 20c each; 2 for 35c; 6 for 95c.

**BELLAMOSA**—A very dark blue variety, strikingly contrastive in connection with the azure shade of Belladonna. 20c each; 2 for 35c; 6 for 95c.



## FLAME FLOWER—TORCH LILY RED HOT POKER (Tritoma)

Large beautiful spikes of orange scarlet, ever-blooming. Succeeds in ordinary garden soil, but responds quicker to liberal treatment; hardy if given protection. Best to bury roots in sand where they will not freeze, 25c each; 2 for 45c.

## GOLDEN GLOW (Double Rudbeckia)

Bears immense masses of large, round, golden yellow flowers for weeks. Plant in garden. 10c each.

## SHASTA DAISY

Our many friends would be surprised to see the enormous size of the large flowering Shasta Daisies. The plants grow vigorously and are perfectly hardy. The large white flowers are borne in the greatest profussion. Price, 10c each; 3 for 25c; dozen, 90c.

## EULALIA

## JAPANICA

## ZEBRIANA

A rapid growing grass with light strips across the green leaves. Very ornamental and is hardy grower. Will form large clumps.

15c each.

Two for 25c

Remember — We save you the delivery charges.





# Taylor's Plants for Farm and Garden

## Sweet Potato Plants

(Ready for Shipment April 25th)

We can supply any quantity from the small garden to the largest fields. Diversify your crop, cotton is too cheap—grow Sweet Potatoes.

Our seed are selected from the best potatoes obtainable in this vicinity and treated as the Government suggests.

We have been bedding several hundred bushels for a good many years and we claim to know a little about growing Sweet Potato plants. And in buying from us you get the benefit of all our experience. Our potatoes are bedded in soil each year that potatoes were never grown or bedded in before. We pack well and guarantee plants to arrive in good condition.

Prices ON EITHER VARIETY OF SWEET POTATOES—Postage or Express Paid—100 for 30c; 200, 50c; 500, \$1.00; 1,000, \$1.90; 5,000 or over, \$1.85 per 1,000; 10,000 or over, \$1.65 per 1,000. If you can use a larger amount write for special prices.

DIFFERENT VARIETIES—We only grow Nancy Hall and Porto Rico. These are best varieties to be had, in our opinion.

The above prices are the market price at the time of going to press. If the market should decline, our prices will be lower.

## Bermuda Onion Plants

Bermuda Onion plants are growing more and more in favor every year. Onions grown from plants mature quicker, and sweeter, will keep longer. To get the best results they must be planted early.

100 for 20c; 500 for 65c; 1,000 for \$1.15.  
Write for prices on larger quantities.

## PEPPER PLANTS

SWEET OR HOT

(Ready for Delivery April 1st.)

Prices of all pepper plants postpaid as follows:  
12 for 15c; 25 for 25c; 100 for 75c.

Planted near together, sweet and hot Pepper will mix, causing all to be hot.

RUBY KING—A pepper of large size, fine for truck growers. A beautiful ruby red when ripe. Good plants from beds. 500 for \$3.00.

CHINESE GIANT—Plants dwarf, mammoth sized fruits. A late variety; grown heavy on account of its mammoth size.

PIMENTO PEPPER—Very mild; most all meat; fine flavor; requires rich moist soil.

RED CHILI—Fruit small, pointed, bright scarlet and quite hot.



## Cabbage Plants

READY NOW

100, 25c; 250, 65c; 500, \$1.00; 1,000, \$1.90

EARLY JERSEY WAKEFIELD—One of the most popular of the extra early varieties; not so large, but fine quality; very solid; fine leaves, sure to head.

CHARLESTON WAKEFIELD—This is a very valuable sort; is only a few days later than the Early Jersey, but is much larger; is a standard, early variety in the south and proves to be one of the best known for the clay and heavy soil; heads solid.

FLAT DUTCH—Large, flat heads. A good variety.

AFTER APRIL 10 YOU MAY DEDUCT 20 PER CENT ON THE CABBAGE PLANT ORDER.

# Taylor's Choice Tomato Plants

SOLVE THE FOOD PROBLEM, GROW TOMATOES

READY MARCH 15, AND LATER

Having had much experience in growing Tomato plants both wholesale and retail, we feel that we will be able to please the most exacting.

**PRICES**—All Tomato Plants at the following prices unless stated otherwise. Postpaid—12 for 12c; 25 for 20c; 50 for 35c; 100 for 65; 250 for \$1.20; 500 for \$2.25. If you want a larger amount, write for prices. When it comes to Tomato Plants, we are headquarters. Below you will find some varieties quoted in quantities.

**NOTICE**—20 PER CENT DISCOUNT—Orders for 100 or more Tomato Plants shipped after May 1, you may deduct the difference, or send full price, and we will send extra plants.

## POT GROWN TOMATO PLANTS

We grow Beefsteak, Fifty-Day and Stone Plants in flower pots. For extra early tomatoes try a few plants, this being the quickest way known to have early tomatoes. Once you try them, you will want no other, if it is early tomatoes you are after. Nice large plants, well rooted, shipped with soil on them. 6 for 25c; 12 for 45c; 100 for \$2.75. Express or Postage Paid. At Greenhouses, 30c dozen.

**PONDEROSA**—Of perfect shape. Very large, early to late. Quality fine. Color pink. Too well known to need much description. A winner 1,000 \$3.00; 2,000, \$5.00.

**EARLIANA**—An extremely early, smooth, bright red tomato; good sizes and vines small but vigorous. This is the tomato that delivers the goods. 1,000 for \$2.75; 2,000 for \$5.00.

**BEEFSTEAK**—Without question is the king of all tomatoes. The world's unbeatable tomato for the main crop. Ripens early and continues to fruit

for a long period. Large, a splendid keeper, very productive. Fine color. Flavor cannot be beat.

1,000 for \$3.75

2,000, \$6.50

## NEW STONE

A standard, main crop; red medium early, a fine canner. Very popular.

1,000, \$2.75

2,000, \$4.75

## PLANTS

READY

MARCH 15

AND LATER

**PERFECTION**—A standard early red variety. As now grown it is very similar to Chalk's Jewel. The fruit ripens early and bears until frost.

**MATCHLESS**—A very dependable, large and smooth tomato, second early sort, makes a good canning variety.

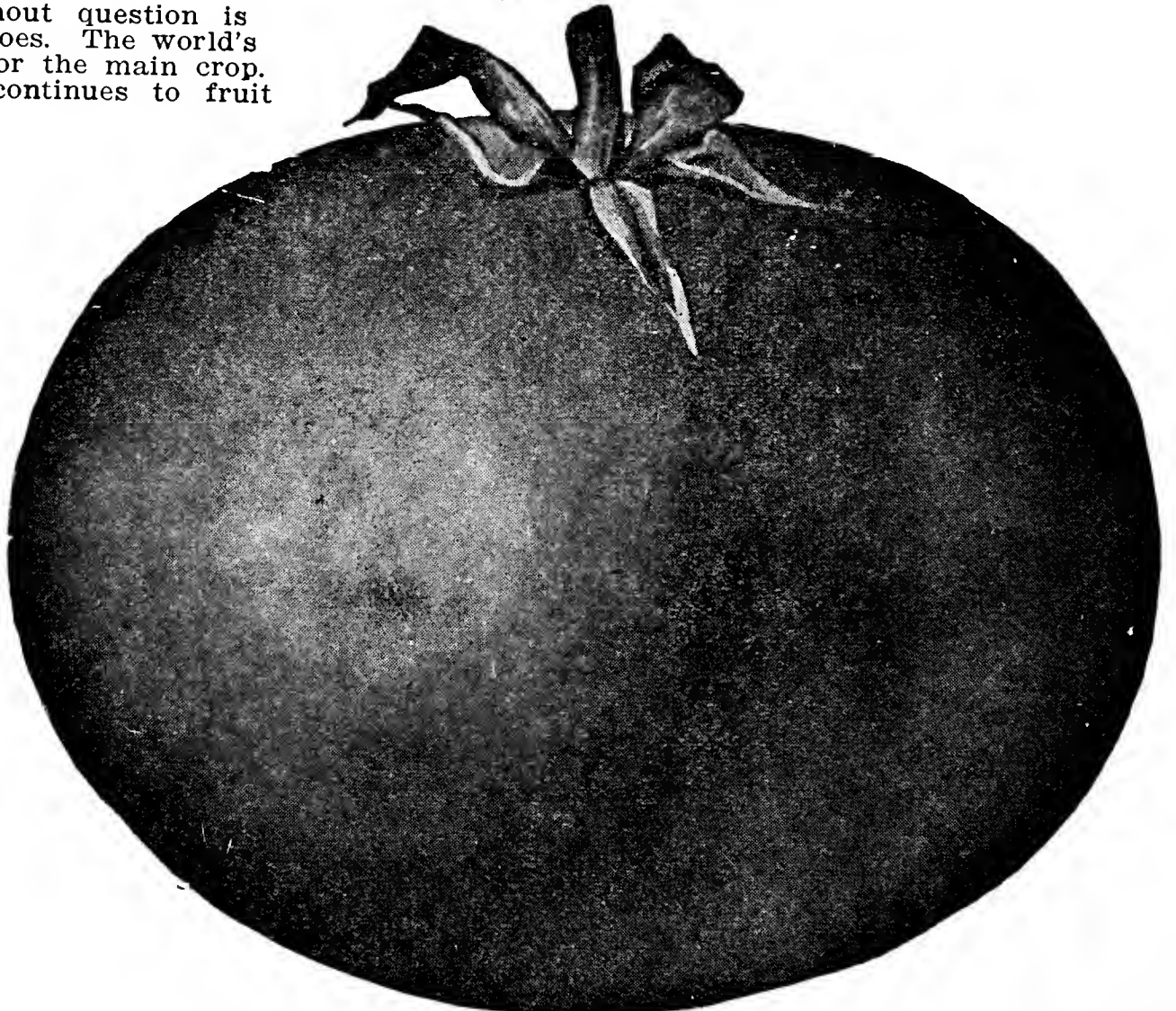
**RED ROCK**—One among the best. Size, beauty, shape, color, flavor, durability and productivity makes it desirable to growers. Similar to Stone.

**MARGLOBE (WILT DISISTANT)**—This variety is a cross between Marvel and Globe, producing a heavy yield, of large, smooth, solid, red fruit which ripens medium early. It is somewhat larger than the Stone, and is highly recommended because of its wilt-resisting features. The havoc wrought by wilt in Tomatoes is serious. If you have been disappointed in growing tomatoes because of this disease, you will be interested in this hardy, wilt-resistant sort.

**JOHN BAER**—Early, smooth bright scarlet, has short, vigorous vines; has less seeds than Earliana and a little later.

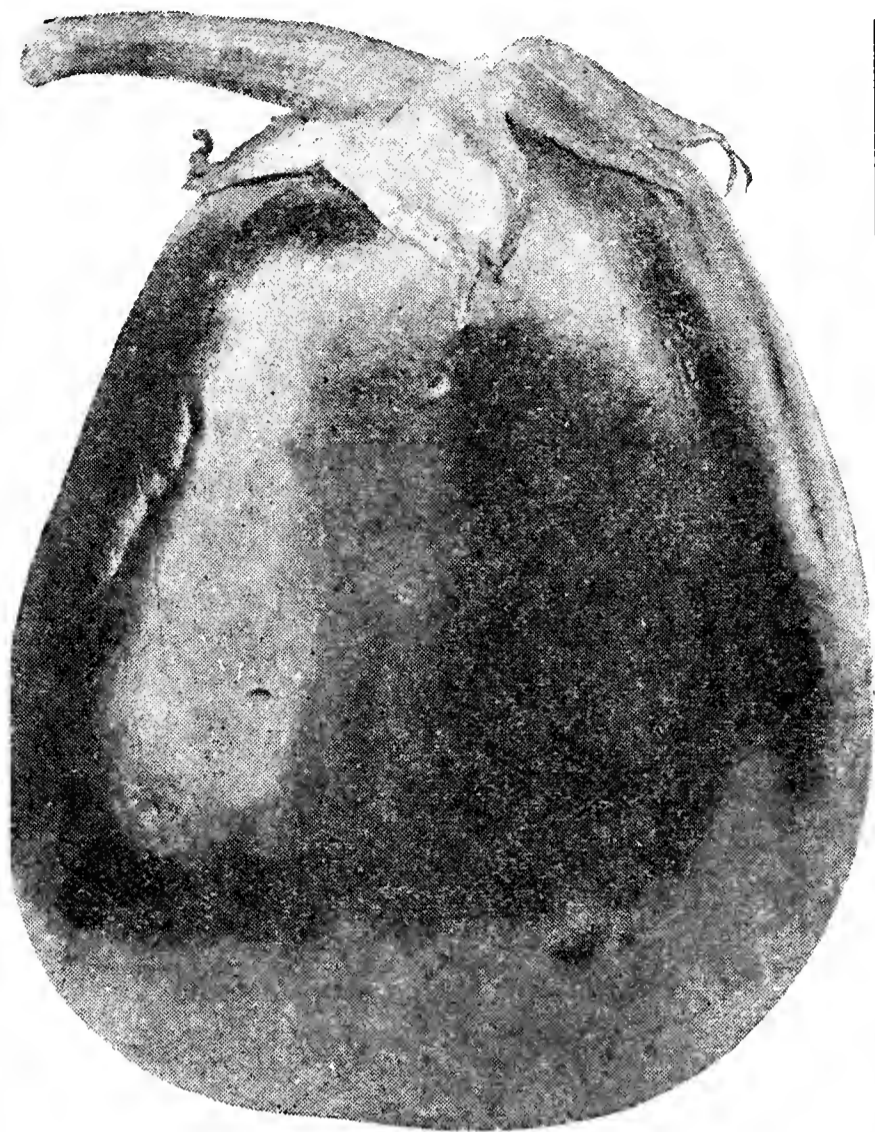
**BONNY BEST**—Fruit generally borne in clusters. A good, uniform, early tomato; scarlet red.

**BUCKBEE'S FIFTY-DAY**—Mr. Bcklbee, the originator, claims that good plants will produce ripe fruit in fifty days after set in the ground. Hence, the name, "50-Day." If it is early Tomatoes you want, try this one. Our plants are grown from originators' seed only. 1,000 for \$3.50.



BEEFSTEAK





EGG PLANT

Fruit a rich, shining purple; cook by cutting in one-fourth slices. Pare. Let stand in salt water one hour. Drain, dip in eggs and cracker crumbs. Fry brown. Plants from hot bed, 20c dozen, pot grown, 6 for 25c.

**WASHINGTON ASPARAGUS**—One of the best; has thick and heavy shoots, long, straight and closely folded tips; rapid grower; set four inches deep; fertilize well. Price, 2 year roots, 6 for 20c; 12 for 35c; 25 for 60c. Postpaid.

**GARDEN SAGE**—Once planted, will last for years. Grow a few and have plenty of fresh or dry sage the year round. Nice plants, 10c each; 3 for 25c. Postpaid.

**ENGLISH MINT**—10c each; 3 for 25c; 12 for 75c; 25 for \$1.25. Postpaid

**CATNIP**—10c each; 3 for 25c. Postpaid.

**RHUBARB ROOTS**—Rhubarb is the earliest plant you can pluck from your garden in the spring; make fine pies and sauces; nice large roots. 10c each; 3 for 25c; dozen, 90c. Postpaid.

**HORSE RADISH ROOTS**—For best results, plant in a moist, partly shaded corner. Nice roots. 2 for 10c; 6 for 25c; 12 for 40c; postpaid.

**If you don't find what you want in Catalog — write us**

# Grapes



## ALL GRAPES TWO YEARS OLD

**CONCORD GRAPE**—A standard grape. Blue-black; excellent flavor; hardy and very productive. 15c each; dozen, \$1.50.

**NIAGRA**—Large fruit, large bunches. Greenish white, changing when fully ripe to pale yellow. 15c each; dozen, \$1.50.

**MOORES EARLY**—Heavy, early producer. Popular for home and market, 15c each; dozen, \$1.50.

**CATAWBA** — Blue-black; hardy and productive. 15c each; dozen, \$1.50.

## White Grapes

**MOORES DIAMOND**—The leading early white grape, ripening slightly before Niagara, between Worden and Concord. White, with rich yellow tinge, juicy; few seeds, almost free from pulp, excellent quality; above medium size, adheres firmly to stem. 15c each; \$1.50 dozen.

**WORDEN**—A splendid Concord type; larger, better quality and earlier. Vine vigorous; hardy and productive. 15c each; \$1.50 dozen.

**CAMPBELL**—Bunch and berry large, glossy black, with blue bloom, sweet and juicy, seeds few and small, part readily front the pulp; very early. 15c each; \$1.50 per dozen.

**SPECIAL**—25 assorted grape for \$2.75; 25 all one variety, \$2.50; postpaid.

## FLOWER SEED

If you have bought many flower seed, you are aware of the fact that many seed catalogued are of varieties almost worthless. Our space is limited, so are only listing such varieties as are winners, no junks.

### KOCHIA, OR BURNING BUSH

Forms regular pyramids from 2 to 3 feet high having a cypress-like appearance. Autumn coloring has given it another name, "Mexican Fire Plant." Plant, 5c.

**MARVEL OF PERU — FOUR O'CLOCK** (Annual)—Handsome, free-flowering, sweet scented; blossoms variegated and striped. Fine mixed—Pkt., 5c; oz., 10c; 1-4 lb., 35c.

### STOCKS (Perennial)

Our assortment of seed includes the best colored and double kind. Pkt., 5c.

### SUNFLOWER

**GOLDEN BALL** (Helianthus)—Far superior to common Sunflowers. The large, rich, yellow flowers are produced on each branch. Makes a beautiful hedge. A beautiful large double variety. Pkt., 10c.

**DWARF NASTURTIUM**—Pkg., 5c; oz., 15c.

**TALL NASTURTIUM**—Pkg., 5c; oz., 15c.

**SWEET PEAS**—Pkg., 10c; oz., 20c; 1-4 lb., 50. Varieties: Spencer Mixed. Fine for cut flowers.

**SWEET ALLYSUM**—(small for borders) — Pkg., 5c.

**CENTAUREA**—(Corn Flowers)—Tall, double, mixed. Pkt., 5c.

**CELOSIA OR COCKCOMBS**—Tender annuals, requiring good soil. If cut before they fade, the head may be preserved during the winter. In flower 30 days. Fine mixture. Pkt., 5c.

**PHLOX**—Drummonds mixed. Pkg., 5c. Fine for beds.

**ASTERS** — Mixed, pkg., 5c. Fine for cut flowers.

**SNAPDRAGON**—Pkg., 5c.  
**COSMOS**—Mixed, pkg., 5c.  
**CYPRESS VINE**—Pkg., 5c. A great climber.  
**MORNING GLORY**—Japanese mixed. Pkg., 5c.

**PINKS**—For beautiful and lasting cut flowers, ease of culture and freedom of bloom, the hardy garden pink has no superior among the annuals. Pkt., 5c; 1-4 oz., 25c.

**RACINUS OR CASTOR OIL BEAN**—Perfection Giant, Pkt., 5c; oz., 20c.

**LARKSPUR**—Double, mixed, pkg., 5c.

**POPPY**—Mixed, pkg., 5c. Very fine.

**ZINNIA**—Giant Double, mixed, pkg., 5c.

**LANTANA**—Fine mixed, pkg., 5c.

**MARIGOLD**—Pkg., 5c.

**SCABIOS**—Mixed, pkg., 5c.

**DIGITALIS**—(Fox Glove)—Mixed, pkg., 5c.

**SALVIA**—Unexcelled for bouquets. Pkg., 5c.

**SWEET WILLIAMS** (Dianthus Barbatus)—A favorite old-fashioned hardy perennial, with sweetly scented flowers of extreme richness, and great variety of colors. Easily grown from seed, pkg., 5c; oz., 75c.

**LUPINUS**—A splendid hardy perennial producing masses of gorgeous blooms in May and June on strong stiff stems 3 feet in length. Pkg., 5c; oz., \$1.00.

### COLUMBINE MIXED COLORS

**CULTURE**—Sow seed which is of rather slow germination in open ground early in spring in any rich, well drained garden soil. Cover seed with one-fourth to one-half inch of fine soil firmly pressed down. In permanent bed plants should have at least one foot each way. Keep clear of weeds and give each year a dressing well rotted manure. Seed may also be sown in fall. Hardy herbaceous perennial, two to three feet high. Pkg., 5c.

**CALENDULAS**—Beautiful rich, yellow, very double. Pkg., 5c.

**BIRD OF PARADISE**—Easily raised. The flowers resemble a gaudy colored humming bird. Pkg., 5c.

## GARDEN SEED

We are only listing the standard varieties which are well known, and do not need a description. You cannot go wrong on these well known varieties.

We give no warranty, expressed or implied, as to description, quality, productiveness or any other matter of any seeds we send out, and we will not be in any way responsible for the crop.

**BEETS**—All varieties: Pkg., 5c; oz., 10c; 1-4 lb., 25c; 1 lb., 85c. Varieties: Crosbys Eypgtian, Early Blood Turnip.

**TOMATOES**—At this money saving price, postpaid: pkg., 5c; oz., 25c; 1-4 lb., 90c; 1 lb., \$2.90. New Stone, Favorite, Greater Baltimore, Perfection, Matchless.

**RADISHES**—At prices that talk: pkg., 5c; oz., 10c; 1-4 lb., 25c; 1 lb., 85c. Early Scarlet White Tip, Icicle, French Breakfast.

**CUCUMBER**—Pkg., 5c; oz., 15c; 1-4 lb., 35c; 1 lb., \$1.10. Boston Pickling, Early White Spine, Early Green Cluster.

**LETTUCE**—Pkg., 5c; oz., 15c; 1-4 lb., 35c. postpaid. Varieties: Big Boston, Early Curled Simpson. Hanson. Price Head.

**GARDEN PEAS**—Pkg., 10c; 1-2 lb., 20c; 1 lb., 35c. Varieties: Alaska, American Wonder, North Excelsor.

**SWEET PEPPER**—See Pepper Plants.

**MUSTARD**—Fancy Curled, pkg., 5c; 1 oz., 10c; 1-4 lb., 25c.

**CABBAGE**—At the following low prices: postpaid: Big pkg., 10c; oz., 20c; 1-4 lb., 75c; 1 lb., \$2.25. Varieties: Early Jersey, Wakefield, Charleston Wakefield, All Season, Succession, Early Drumhead, Late Drumhead.

**PARSNIPS**—Pkg., 5c; oz., 10c; 1-4 lb., 30c.

**OKRA**—Pkg., 5c; oz., 10c; 1-4 lb., 30c; Varieties: Dwarf Green, French Market.

**WATERMELONS**—Pks., 5c; oz., 15c; 1-4 lb., 25c; 1 lb., 90c. Varieties: Irish Gray, Kleckley Sweet, Tom Watson, Halberts Long, Monte Christo, Georgia Rattlesnake, Stone Mountain.

**CANTALOUPE AND MUSHMELON**—Pkg., 5c; oz., 15c; 1-4 lb., 30c; 1 lb., \$1.00. Varieties: Rocky Ford, Banana.

### NEW GIGANTIC TASMANI BEAN

#### A Wonderful Novelty

This Bean comes to us highly recommended by a large wholesale seed house in the north as follows: it is more like a cucumber or melon than a bean, grows very large, some beans weighing 20 lbs. A real delicacy superior to other vegetables. It can be prepared for the table in many ways, fried, baked or boiled. It is most delicious in flavor. One of these monstrous fruits will satisfy a family of seven and have some left. The fruit weighs as high as 20 lbs., but are best when about 6 pounds. A very heavy yielder, easy to grow. More mature fruits stored in a cellar will remain in good condition until Christmas. Culture same as watermelons; not more than two or three seed to hill.

**TO COOK**—Slice thin, stew in butter 30 minutes. Add raw chopped onions, stew 5 minutes longer. Makes a fine dish that will take place of choice meat stews. **Packets, 10c.**



# PLAN YOUR PLANTING CAREFULLY

To carry out plan submitted here, we list plants required, which we offer at attractive prices.

## LANDSCAPE PLAN NO. 1

A	2 Spirea Van Houtte, 2½ to 3 ft.	.....\$ .50
B	6 Spira Frobeli, 18 to 24 in.	.....2.10
C	6 Spirea A. Waterer, 15 to 18 in.	.....2.10
D	2 Abelia, 2 to 3 feet	......70
E	2 Weigelas, assorted, 2 to 3 ft.	......80
F	1 Mock Orange, 2 to 3 feet	......35
G	1 Deutzia, Crenata fl. pl., 3 to 4 ft.	......40
H	1 Butterfly Bush, 2 year	......35
I	1 Wax Ligistrum	......75
J	10 Japanese Barberry, 15 to 18 in.	.....2.00
K	5 Hydrangea, P. G., 18 to 24 in.	.....1.50
L	2 Snowberry, 2 to 3 feet	......70
M	1 Common Purple Lilac, 3 to 4 ft.	......45
N	1 Althea, 3 to 4 feet	......35
O	1 Calycanthus, 2 years	......40

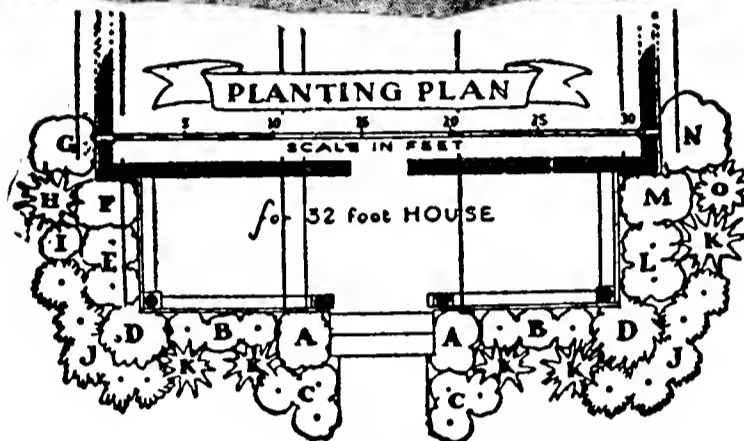
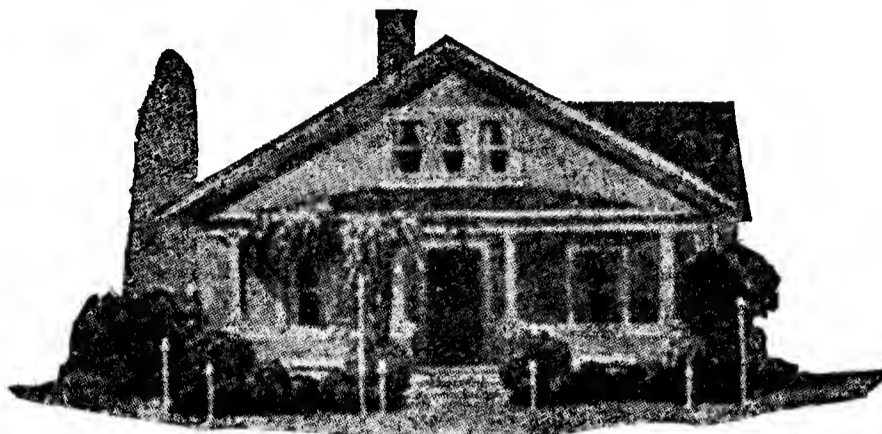
Regular Value \$13.45

**Special Price, \$10.90**

EXPRESS PREPAID

## LANDSCAPE PLAN NO. 2

We can give you the same planting in smaller plants for \$8.90.



## LANDSCAPE PLAN NO. 3 Evergreens

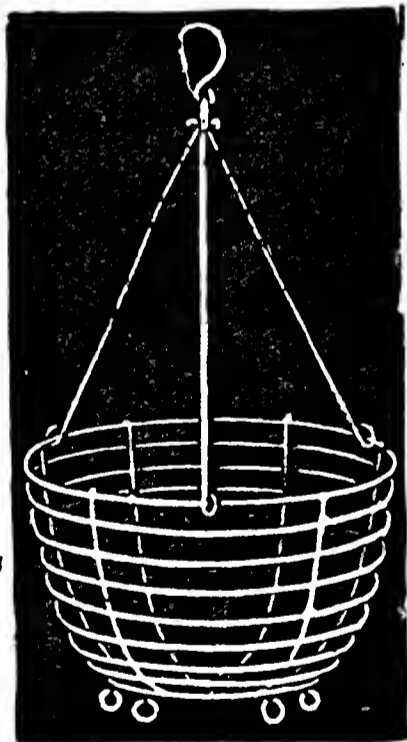
A & A.	2 Spiny Greek Juniper, 12 to 15 in.	.....\$2.00
D & D.	2. Berkmajns, 18 to 24 in, B & B	..... 2.50
M & F.	2. Bokers, 24 to 30 in., B & B	..... 3.00
B & B.	2 Spirea Von Houtea	..... .50

Regular Price, \$8.00

**SPECIAL PRICE, \$7.50**

## HANGING BASKETS

We believe this to be the best wire hanging basket on the market today. You can either hang it up or set any place you may desire. We have baskets 12 inches in diameter for 45c; fourteen inches, 50c.



## GREEN SHEET MOSS

For lining the baskets, moss for 12-inch basket, 15c; 14-inch basket, 20c, postpaid.

Remember—Taylor pays the transportation charges on everything, unless specifically stated otherwise. Our prices to you is to you.

**NOTICE THE LOW PRICES TAYLOR IS OFFERING TO YOU IN THIS 1932 PLANT GUIDE — AND COMPARE THEM WITH OTHERS.**

## BASKET COLLECTION NO. 1

One Boston Fern, two Parlor Ivies, two Wandering Jews, two double Geraniums, one Variegated Vinca, one Coleus, one Weeping Lantana, two other plants, our selection. Total value \$1.35. Special price, 90c.

## BASKET COLLECTION NO. 2

Two double Geranium, two Boston Ferns, two Feather Ferns, two Ivies, two lady Finger, two Verberna. Total value, \$1.60. Special price, \$1.20.

## PORCH BOX COLLECTION

Four Coleus, four Jews, four Ivies, four Ferns, two Vincias, two Geraniums, two Lantanas, and five other cuttings and plants, our selection. Total value, \$3.00. Special Price, \$2.00.

## PORCH BOX COLLECTION (For Sunnyside)

Two Geraniums, two Varagiated Vincas, two Wandering Jews, two Verbenas, four Salvia, two Coleus, two Lantanas, four Petunias (mixed), two Acalpyha, two Ivy. Total value \$2.35. Special Price, \$1.80.

## PORCH BOX COLLECTION (For Shady Side)

Two Norwood Ferns, two Boston Ferns, one Plumosa, one Sprengeri, four Ivies, four Coleus, two Bergonias, two Artillery Plants, two Cigar Plants, two Wandering Jews, two Strawberry Geraniums. Total value, \$2.85. Special Price, \$2.25.

# Fine Shrubbery At Reduced Prices

EVERYTHING SHIPPED ANYWHERE IN U. S. EXCEPT PAGES 23, 24, 25, 26, 27 WHICH ARE FOR SALE IN ARKANSAS, OKLAHOMA, ILLINOIS, KANSAS AND MISSOURI ONLY

Dozen Plants of Same Size and Price at 10 Times the Price of One Plant

All Shrubs field grown, postpaid.

We have added to our greenhouse a nursery of shrubbery, which we have had State Inspected. Can furnish these tree and shrubs with Certificate of Inspection with each shipment. (See Certificate on inside front cover).

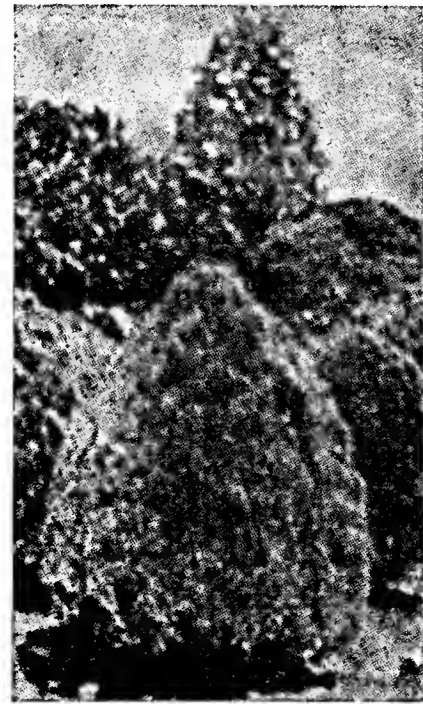
As our nursery stock is limited, we take out license to sell only in the states of ARKANSAS, OKLAHOMA, ILLINOIS, KANSAS AND MISSOURI.

**ABELIA GRANDIFLORA**—Plant in half-shaded place; an evergreen producing immense quantities of tubular shaped white flowers; about an inch long. Bush, dense and compact; fine for specimens or hedges; plants 12 to 15 inches, 20c each; 2 for 35c; 18 to 24 inches, 30c each; 2 for 55c.

**CALYCONTHUS**—Sweet scented shrubs, flowers chocolate colored. Very desirable. Field grown, 18 to 20 inches, 35c each; 2 for 65c; 2 to 3 feet, 50c each; 2 for 95c.

**CAPE JASMINE**—A beautiful evergreen shrub blooms white and highly perfumed. Requires some protection in winter. Small, 25c; medium 50c; 20 to 24 inches, plants, 75c.

**CALIFORNIA PRIVET**—The greatest and most used plant for hedges; green foliage; grows well most anywhere. Price, 6 for 50c; 15 for \$1.00; 50 for \$2.25; 100 for \$4.00.



Bonita Arborvitae in front  
Pyramid in rear  
(See page 26)

**AMoor RIVER PRIVET SOUTH**—This is among the best Privet grown; an evergreen fine for hedges or for specimen plants. 24 to 30 inches high, branched, 10 for 90c; 50 for \$3.50; 100 for \$6.00.

**SNOWBALL**—An old fashioned shrub that is still very popular. Covers with large white balls of blooms, that look like snow balls. 12 to 15-inch plants, 25c; 2 to 3 ft., 50c.

**RED BARBERRY THUNGBURGI**—New and very attractive; same as Japanese Barbory except this one is red all season if grown in the sun. Nice plants, 20c each; large plants, 50c each.

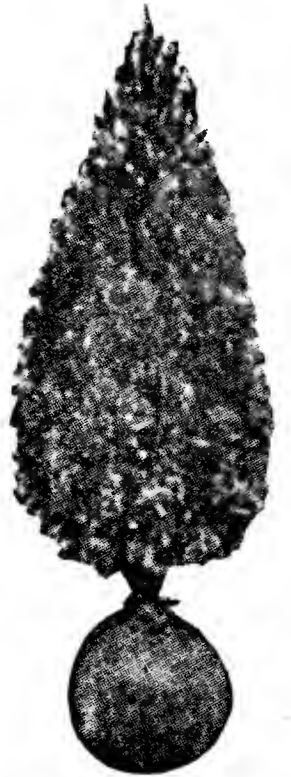
**BERBERIS THUNBERGI**—A very attractive shrub, as single specimen on or about the lawn, or for planting in corners by the house or porch; fine for hedges; 10 to 12 inch, 10c; 12 for \$1.00; 100 for \$7.00; 18 inches, well branched, 25c each; 2 for 45c; dozen, \$2.25.

**GOLDEN ELDER**—The golden yellow leaves contrast beautifully with other shrubs. Flowers white; grows naturally, 10 to 12 feet. But can be pruned into a neat compact bush. 12 to 15 inch, 20c; 3 to 4 feet, 40c.

**SYRINGA, VULGARIS (Common Lilac)**—This is the well-known Lilac of the old-fashioned garden. A tall shrub with smooth, heart-shaped leaves and great panicles of most fragrant blossoms in spring. Much used as a cut flower. It grows well in any garden soil, but prefers a heavy loam. 25c each; large, 50c.

**PHILADELPHUS (Mock Orange)**—Flowers very fragrant, cream white. Plants 15 to 18 inches, 15c; 18 to 24 inch, 20c.

**PHILADELPHUS VIRGINAL**—The first of the ever-blooming Mock Oranges to win our hearts; double, semi-double and single flowers appearing in small bunch, and so enchantingly sweet that we wonder someone has not converted this flower into "Mock Orange" perfumes. 35c each. Large, 50c.



Bakers Pyramid  
Arborvita  
(See Page 26)

**SNOWBERRY**—Small pink flowers, large white berries that hang on plant through winter. 35c each.

**POMEGRANATE**—Summer flowering; tall growing; shrub flowers of pleasing red color. 40c each.

**FORSYTHIA (Golden Bells)**—This is one of the most useful shrubs for the permanent decoration of buildings. It can be easily trained over a wall, fence or tree trunk. The flowers are bell-shaped, of a clear yellow. It is the earliest shrub to bloom. 25c each; large, 35c each.

**TAMARIX AFRICANNA**—A handsome shrub of strong growth; fine feathery foliage, giving branches a plumlike appearance. Delicate pink flowers. Will grow anywhere; fine for background and shrubs. 20c each; large, 30c each.

**BIRD OF PARADISE**—Small leaf, yellow plume-like when in bloom. Beautiful, strong plants, three to four feet, 50c each.

**EVERBLOOMING BUTTERFLY BUSH**—Plant either in fall or spring. Makes a beautiful blooming plant first summer. Lilac colored flower. Pot grown, 15c each; field grown, 25c 3 to 4 feet, 40c; 3 for \$1.00.

**WISTARIA**—Hardy, nursery grown vines; purple or white. Very fine. Our price, 20c each; 2 for 35c.

**MATRIMONY VINE**—A hardy climber; will flourish everywhere. Produces purple flowers later a crop of scarlet berries; also a good carpet vine. 18 to 24 inches, 20c; 24 to 36 inches, 30c.

**HONEYSUCKLE**—A good hardy vine for covering up anything. Highly perfumed. Fine plants, 15c each; 2 for 25c.

**RED HONEYSUCKLE**—A fine, hardy vine for covering or shading. Price, 25c.

**BEGONIA**—A large climbing vine; large flowers; dark red throat; fine for covering unsightly places. 20c each; 2 for 35c.

## SHRUBBERY AT REDUCED PRICES

**DOUBLE ALTHEAS, OR ROSE OF SHARON**—They are covered in beautiful double blooms in August and September and sometimes longer. Will grow from three to seven feet tall; compact and bushy. Guaranteed to please. Can give you white, red or pink. 35c each; 2 for 65c;

**SPECIAL**—Single Mixed Altheas, white, light pink, light blue, large plants, 20c each; 2 for 35c; 6 for 90c; postpaid.

**FIORSYTHIA SUSPENS**A — The drooping or weeping variety; 12 to 15 inch plants for 15c each; 18 to 24 inches, 30c.

**HONEYSUCKLE**—(Bush)

**LONICERA**—The upright Honeysuckles (6 to 12 feet) have early, pretty flowers followed by showy berries that last through the fall. Their rounded leaves are among the first to break forth in spring, and are a most freshening green amidst the dull brown hues of unawakened neighbors. Make very desirable bulky screening hedges, and the nucleus of tall shrub groups; doubly valuable because they will thrive in partial shade.

**BELLA ALBIDA**—Flowers white, in great fragrant clusters, followed by ropes of red berries which remain all summer. Price, 18 to 24 in., 20c each; 12 for \$1.50.

**GRANDIFLORA ROSEA** (Pink Tatarian Hskl) —The tallest brush and the largest flower, with beautiful rounded leaves of a lively green shade. An old bush may be 12 feet high, the arching branches supporting an unbroken wall of verdure to the ground. In June this mass is thickly spangled with starry bloom, tender rose pink, and very noticeable. 18 to 24 inches, 20c; 2 for 35c; 12 for \$1.50.

**THE BEAUTY BUSH** (*Kolkwitzia Amabilis*)—One of the newest, rarest and most beautiful of the new shrubs, introduced by the Arnold Arboretum. Closely allied to the abelias; perfectly hardy. Ultimately reaches 6 feet in height and five feet in diameter and produces its abelia like flower with great profusion; pot plants, postpaid, 25c each; 2 for 45c.

**HIBISCUS**—(Mallow)—Perfectly hardy for outside growing, mixed colors. 15c each. See Index for name varieties of Hibiscus.

**WEIGELA**

**WEIGELA**—(Eva Rathke)—Brilliant crimson flowers, borne profusely from mid-summer until fall. The bushes grow six feet tall and spread six feet. Does well in sun or semi-shade. 18 to 24 in., 25c; 2 to 3 feet, 40c.

**WEIGELA ROSEA**—This is a most excellent free-flowering shrub of elegant growth and erect, yet compact habit. All during June the bush is covered with a mass of rose-colored blooms. 25c each; large, 40c each.

**ROSEA NANA VARIETA**—Leaves margined and streaked creamy white; flowers pink. A pretty combination. Dwarf. Price, 25c each; large, 40c each.

**EVONYMUS JAPONICA**—A very fine hardy ornamental evergreen; good grown as a pot plant, hedge or as a specimen on the lawn; a big seller; sure to please. 8 to 12 inches, 20c each; \$2.00 per dozen; 15 to 18 inches, 30c each; \$2.95 per dozen.

**DEUTZIS**

**DEUTZIS CRENATA ROSEA**—A fine upright growing shrub, grows about six feet tall. Pink blooms. 20c each; 2 for 35c.

**DEUTZIS (Pride of Rochester)**—Grows strong and upright, four to six feet high, double white flowers, 25c each; large, 40c each.

**HYDRANGEAS**

**HYDRANGEA (Hill of Snow)** — (*H. Abroecens Grandiflora*)—One of the most valuable characteristics of this shrub is its coming into bloom just after the passing of all the early spring flowers; flowering season from May until late August, makes it an acquisition on any lawn; the heads of flowers are produced on long, strong stems, making them good for cutting for indoor decoration and at time when few other flowers can be obtained. 12 to 18 inches, 30c each; 2 to 3 feet, 50c each. Does best when planted on North side of house.

**PANICULATA GRANDIFLORA**—Blooms in July to September. The flowers are rich, creamy white, and immense clusters, often more than a foot long; it blooms in August the first and every succeeding year, and continues in bloom for months. It is entirely hardy, no trouble to grow, and splendid effects can be obtained with this free-flowering shrub by planting in masses along driveways, in groups among shrubbery as a center for beds. Does best on South side of house. Price, two-year, strong field-grown plants, 30c each; 2 for 55c; 2 to 3 feet, 50c.

**FLOWERING LOCUST** — A good easy, quick growing shrub. Will grow ten feet high. Cover with clusters or pink flowers, resembling sweet pea blooms. Field grown. 18 to 24 inches, 20c each; 24 to 36 inches, 30c each; 36 to 48 inches, 40c. Postpaid.

**FLOWERING CRABS**

Rounded, compact, small trees largely used in lawn groups and high shrub borders, for their profuse early bloom; their dense, glossy, handsome foliage which colors richly; and their ornamental fruits.

**ATROSANGUINEA**—Makes a beautiful contrast to the other varieties by reason of its darker red flowers. The buds are deep purplish red, and the entire flower tinged purplish. 2 to 3 feet, 35c.

**FLORIBUNDA**—A large shrub or small tree, often thorny, with rose-red flowers borne in great profusion in May. The fruit is red and very small. 2 to 3 feet, 35c.

**NEIDZWETZKYANA**—Purplish foliage, the wood and bark also tinged with red. Extra large flowers deep pink, the edible fruits purple. 2 to 3 feet, 35c.

**SCHEIDECKERI**—An extremely free-flowering variety, the upright branches laden full length with double pink flowers. The succeeding fruits make excellent jelly. 2 to 3 feet, 35c.

**CRAPE MYRTLE**

Crape Myrtle are slow in starting, there is always hope of their growing as long as the bark is green.

**INDICA**—Very beautiful shrub. A profuse and continuous bloomer; flowers bright rosy pink, curiously crimped petals. Price, 35c each; large, 50c.

**NEW CRIMSON**—Vivid cerise. Price, 35c each; large, 50c.

**WHITE**—Flowers purest white and beautiful; of recent introduction and a general favorite where known; of vigorous and symmetrical growth. Price, 35c each; large, 50c.

**PURPUREA**—Of a peculiar purplish crimson. Dwarf. Price, 35c each; large, 50c.

**CORNUS FLORIDA RUBRA**

Pink Flowering Dogwood. Bearing a mass of deep pink, blooms in early spring. Very handsome in foliage and flower, leaves turn dark crimson in autumn. A most pleasing effect when planted in contrast with the native white-flowering sort (*Cornus Florida*) Thrifty in sun or semi-shade; likes well drained moist soil. 2 to 3 feet, \$1.50 each.

**CORNUS, SUBRICA (Red Branched Dogwood)**—This variety grows ten feet tall and its coral red branches are very effective in winter, especially when planted in masses. The flowers appear in clusters and are a creamy white color. Fruit pale blue. The Dogwood likes a moist soil. 25c each; 2 for 45c; 4 for 75c.

**SPIREAS**

**SPIREA ANTHONY WATER**—A fine hardy perpetual blooming shrubs, particularly desirable for the door yard and lawn, or where ever fine, hardy flowering shrubs are wanted. Makes nice round bushes only 18 to 24 inches high; begins to bloom almost as soon as planted, continuing all summer and fall; rich, rosy, red flowers. Strong plants will bloom this season. 6 to 9 inch, will bloom this season, 15c each, 2 for 25c; 12 to 15 in, 25c each, 2 for 45c; 15 to 18 in., 40c each; 2 for 75c.



## SHRUBBERY AT REDUCED PRICES

**SPIREA VAN HOUTTEI**—Grandest of all white Spireas; it is a beautiful ornament for the lawn at any season, but when in flower it is a complete foundation of white bloom, the foliage hardly showing. Clusters of twenty to thirty flat white florets make up the racemes, and are set close along the drooping stems. Price, blooming size, 20c; dozen, \$2.00.

**OPULIFOLIA**—Growth upright, attaining 8 to 10 feet, although the heavy white flower umbels in June make the branches droop; old flower heads turn to dark red, making a striking variety of colors at different stages of maturity. 12 to 18 in., 15c each; 2 to 3 feet, 25c each.

**SPIREA THUNBERGI**—The first of all Spireas to bloom. The entire bush is covered with small white flowers. A real beauty when in full bloom. 12 to 15 inch plants, 25c each; 15 to 18 inch plants, 30c each; 2 for 55c.

**SPIREA BILLIARDII ALBA**—(Grows to five

feet, flowers in summer). Plum-like spikes of pure white flowers. Price, 24 to 30 in., 20c, 2 for 35c; 12 for \$2.00.

**DOUGLASI**—Upright in growth to 7 feet, with reddish brown branches and narrow, oblong leaves. Bears spikes of beautiful deep rose-colored flowers in July. 18 to 24 in., 20c; 2 for 35c.

**REEVESIANA**—Throwing out long branches that curve gracefully and covered with clusters of double white flowers. Price, 18 to 24 inches, 20c; 2 for 35c.

**BUMALDA SPIREA**—Dwarf; everblooming; color pink. 15 to 18 inches, 25c each.

**BLUE SPIREA**—Good plants, 20c each.

**JAPANESE ROSE**—*Kerria Japonica* flore pleno—Double flowered *Kerria*. This variety has showy double flowers which are of a vigorous growth. Shrubs are slender green branches, perfectly hardy. An attractive shrub for any garden. Strong plants, 24 to 30 inches, 35c each.

## EVERGREENS – PRICES REDUCED

We have a large stock specimen evergreens at very reasonable prices. The following are all dug with a ball of earth and wrapped in burlap. These can only be sent by express or freight. The customer paying the charges at destination. The prices quoted are F. O. B. Russellville. Packed free. (B. & B. means balled and burlapped).

Please notice the savings in these prices. Buy your evergreens from us and save the difference. All B. & B. evergreens are shipped by express or freight. Not paid. All Pot Grown Plants sent Post Paid.

Come and see our evergreens. We have several sizes, not listed here. Our evergreens are the finest we have ever seen. Quality guaranteed.

### BERKMANS DWARF GOLDEN ARBOR VITAE

This is one of the best low-growing Arbor Vitae, very bushy and compact. Fine as a specimen or group planting. Plant anywhere a low-growing plant is required. This is one evergreen liked by all. Five feet at maturity. Pot Grown. 30c each; 2 for 50c; 15-18 in. B. & B., 90c; 18-24 in. B. & B., \$1.25; 30-36 in. B. & B., \$2.25.

### BAKERS PYRAMIDAL ARBOR VITAE

This is one of the best pyramidal Arbor Vitae we know of; grows tall and slender. Will reach a height of 7 or 8 feet. Stately ornamental. Used much in landscaping. Pot grown. 25c each; 2 for 45c; 15-18 in. B. & B., 90c; 18-24 in. B. & B., \$1.25; 24-30 in. B. & B., \$1.50.

### BONITA ARBOR VITAE

Very compact dwarf habit, almost round in shape, dark green color; a standard variety; When matured about 4 feet high and 4 feet in diameter. Pot grown. 25c each; 2 for 45c; 15 to 18 in. B. & B., \$1.00; 18 to 24 in. B. & B., \$1.65.

### VESTAL'S DWARF GOLDEN

Very dwarf and compact, of perfectly symmetrical, conical shape. Foliage is a beautiful golden tint which it holds throughout the year. Succeeds admirably in the South and is especially adapted for use in urns and very formal situations, where a dwarf conventional form is desired. Pot Grown: 25c; 2 for 45c; 15 to 18 in., B. & B., \$1.25; 18 to 24 in. B. & B., \$1.75.

## How to Plant Evergreens

- (1) Dig hole a foot larger and deeper than ball of earth. Provide good, loamy top soil to fill around ball.



3 FILL GOOD TOP SOIL UP AROUND BALL. PACK FIRMLY WITH FEET OR SETTLE BY FILLING HOLE WITH WATER

2 SET TREE IN HOLE TRIFLE LOWER THAN IT STOOD IN NURSERY

4 LOOSEN BURLAP AT TOP OF BALL AND ROLL BACK OR CUT OFF

5 FILL HOLE WITH SOIL. PACK FIRMLY AND LEAVE TOP OF GROUND COVERED WITH LOOSE EARTH, OR BETTER MULCH WITH STRAWY WELL ROTTED MANURE

### CEDRUS DEODARA

A real beauty in evergreens; pyramidal growing from broad base to point at tip; branching horizontal foliage silver or bluish color; a striking beauty on the lawn as specimen adds grace and beauty to the finest grounds. Large growing. This plant is used in the South in preference to spruce as it thrives where spruce will not when matured will reach the height of 35 feet, the base 20 feet in diameter. 15 to 18 in. B. & B., \$1.50; 24 to 30 in. B. & B., \$2.25.

**ARIZONA CYPRESS**—Beautiful blue, or glaucous pyramidal tree, horizontal branches, dense foliage, making perfectly shaped specimens for hot or dry sections. 6 to 8 inches. Price, 20c each, 2 for 35c, pot grown. 12 to 15 in. B. and B., 65c; 24 to 30 in. B. and B., \$1.50.

### IRISH JUNIPER

Upright pyramidal, slightly spreading shiny light green color. A beautiful plant; pot grown, 20c each, 2 for 35c; 15 to 18 in. B. and B., \$1.00; 36 to 40 in. B. and B., \$2.50. Very fine specimen plants.

**SPINY GREEK**—A very ornamental dwarf Juniper, conical in form, well branched with grayish-green, glaucous foliage. A distinct species of great beauty. Excellent for conifer groups, for specimens or for tubs and urns. Pot grown, 25c each, 2 for 45c; 12 to 15 in. B. & B., \$1.00; 15 to 18 in. B. & B., \$1.50.

## EVERGREENS - PRICES REDUCED - (Continued)

**PFITZER**—The most satisfactory of the low spreading or prostrate type of Juniper that we recommend for the South. Unusually beautiful in its distinctive grayish color and irregular, flat spreading growth. For the terrace planting, prominent low groups, about foundations, and as specimens it cannot be excelled. Pot Grown, 25c each, 2 for 45c; 12 to 15 in. B. & B., \$1.00; 12 to 18 in. B. & B., \$1.65.

### BROAD LEAF EVERGREENS

#### MAHONIA

**AQUIFOLIA**—(Oregon Grape) — Dense, low, spreading shrub, beautiful holly-like foliage, glossy green, bluish-purple and bronze, moderate growth, 3 to 5 feet; exceedingly hardy; blossoms yellow racemes, March to May, blue grape-like berries. Fine for low shrubberies, mass planting, individual specimens or groups, equally good in shade or sun. 15 to 18 inches, \$1.00 each.

**NANDIA**—A beautiful erect dwarf shrub; leaves light green, assuming coppery red tones in winter; white flowers, followed by clusters of red berries in fall; pot grown plants, 6 to 8 inches. 25c each; 2 for 45c; 4 for 85c; 12 to 15 in., B and B., \$1.00; 15 to 18 in. B and B., \$1.25; 18 to 24 in. B. and B., \$1.85.

#### CHERRY LAUREL

One of the most beautiful broad leaf evergreens Glistening green foliage. Upright growth, attaining considerable height. Can be shaped to any desired form and kept at any height Al-

ways beautiful, the white plum-like blossoms of the Cherry Laurel make it highly desirable for spring effects. 18 to 24 in., \$1.25.

**EUONYMUS ARGENTEA**. — Leaves green, variegated with white. Price, pot grown, 20c each; 2 for 35c; 12 to 15 in. B. and B., 50c; 15 to 18 in. B. and B., 85c.

**WAXLEAF PRIVET**—(Lucidum Compacta)—Leaves very thick and waxy, the upper surface being highly glossed of black-green color and underside of a lighter shade. Compact, heavily branched. Wax Privet grows in shade or full sunlight. In any difficult place it will thrive better than any other evergreen or shrub. Grows to be six feet or more, but so wide and compact can be kept at any height or shape. Can be sheared, used in tubs with great success. 15 to 18 in. B. and B., 50 Bare Rooted, 40c; 18 to 24 in. B. and B., 85 Bare Rooted, 75c.

#### MAGNOLIA

**MAGNOLIA GRANDIFLORA**—(Southern Magnolia)—The grandest of all our native broad-leaved evergreen trees. A native of the middle sections of the Southern States. Succeeds best in a rich soil. Nothing more conspicuous can be seen among evergreens when its large, white flowers are fully expanded. Their period of blooming begins in the middle of April and lasts until August. Pot Plants, 20c; 2 for 35c; 24 to 36 in. B. and B., 85c, Bare Rooted, 75c; 36 to 48 in. B. and B., \$1.25, Bare Rooted, \$1.00.

## TREES FOR SHADE

### [Or Street Planting]

**BALM OF GILEAD**—A remarkable, rapid growing tree, with glassy foliage. 3 to 4 feet, 35c.

**SUGAR MAPLE**—(or Rock Maple)—A very fine tall growing straight and spreading shade tree grows well in any soil except wet and soggy soil, 18 to 24 in., 30c; 2 for 55c; 2 to 3 feet, 45c.

**CHINESE LOMBARDY POPLAR**—Tall and slender, quick growing, very ornamental; resembles The Lombardy. 3 to 4 feet, 25c; 4 to 5 feet, 35c.

**LOMBARDY POPLAR**—Very tall and slender growing; makes a beautiful background. Very ornamental. 2 to 3 feet, 15c; 2 for 25c; 3 to 4 feet, 20c; 2 for 35c; 4 to 5 feet, 25c; 2 for 45c; 6 to 8 feet, 50c; 2 for 90c.

**CAROLINA POPLAR**—A vigorous, native pyramidal tree of rapid growth, with large glossy leaves valuable for quick shade. Makes a fine spreading head if well cut back the first few seasons. Same price as Lombardy.

**SILVER LEAF POPLAR**—Useful in breaking the monotony of lower round-topped trees. Will grow to a tall spire 80 feet high. Its leaves are glossy green, silvery beneath, creating an attractive flashing effect when stirred by the winds. Often used in landscaping against blank wall spaces of high public buildings. Same price as Lombardy.

**AMERICAN ELM**—An extra good shade tree. 3 to 4 feet, 20c each.

**CHINESE ELM**—New. A great grower. Can not be beat where high class shade trees are wanted. Drought and cold resistant. Dense and graceful, making a quick shade. 4 to 5 feet, 40c; 6 to 8 feet, 75c.

**CATALPA BUNGEI** — (Umbrella Catalpa)—Flourishes in all soils and climates. Large glossy heart shape, deep green leaves, laying like shingles on a roof. Very ornamental; large branched. 5 to 6 feet, \$1.00 each.

**CATALPA SPECIOSA**—A good looking fast growing, large shade tree; has white flowers. Two to three feet high, 20c each; 3 to 4 feet, 25c; 4 to 5 feet, 30c; 5 to 6 feet, 35c.

**CHINESE UMBRELLA**—Dense spreading umbrella-like head. Very useful for formal objects. Quick growth. 2 to 3 feet, 15c each; 3 to 4 feet, 25c each.

**MIMOSA**—A remarkable fine, rapid growing tree with spreading branches, flat top foliage fine and feathery, large pink flowers bloom on tips of branches, blooms middle of May and continues several weeks.

**MAGNOLIA GRANDIFLORA**—See Broodleaf evergreens.

**SYCAMORE**—A lofty wide spreading tree, gray green bark, fast growing. Fine for street or lawn planting. 2 1-2 to 3 feet, 20c.

**WEeping WILLIOW**—Branches long, slender, weeping habit. Very fine. 2 to 3 feet, 25c; 5 to 6 feet, 50c. All shrubs are postpaid.

**MULBERRY**—Good for fruit or shade. 2 to 3 feet, 20c each; 3 to 4 feet, 25c; 5 to 6 feet, 40c.

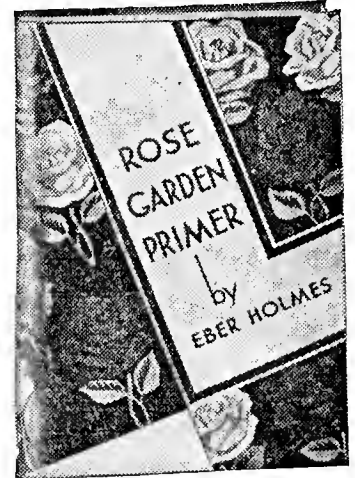
**SYCAMORE**—A lofty, wide spreading tree. Valuable for its handsome foliage. Bark, an attractive grayish green. Through the winter it has a mottled appearance. 3 to 4 feet, 20c each.

**RED BUD**—A fine small flowering tree, used as a large shrub, bearing masses of reddish purple flowers before the leaves appear. 4 to 5 feet, 25c each.

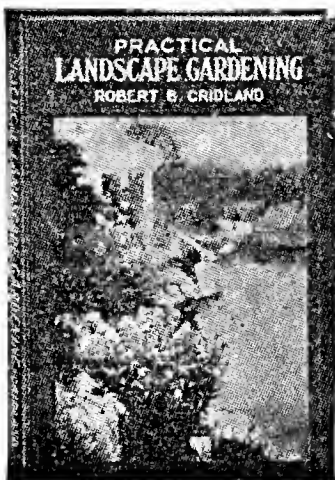
# BOOKS for AMATEURS



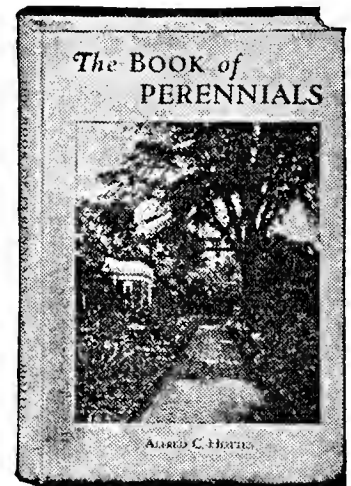
**ROCK GARDEN PRIMER**—By Archie Thornton.—With pen-and-ink drawings, showing methods of planting and pictures of the finished work, will be most helpful. Its contents include: Choice of Site for Rock Garden, Rocks, Drainage and Soils, Construction, Propagation of Rock Plants, Bulbs for Rock Garden, Evergreens for the Rock Garden, Flowering Shrubs and Trees for a Background, Easily Grown Rock Plants, and Answers. 224 pages, 70 illustrations, bound in imitation leather. Postpaid, \$2.15.



**ROSE GARDEN PRIMER**—By Eber Holmes.—Rose growing at home, for pleasure, told in simple, instructive manner. Helpful to the beginner, also to the advanced amateur. Contents: Origin, Early History, Culture, Classification, Varieties for All Purposes, Making Garden, Planting, Pruning, Winter Protection, Propagation, Roses for Every State, Insect Pests and Diseases, A. B. C. of Rose Growing, Questions and Answers. 224 pages, 70 illustrations, bound in Span-o-tone cloth. Postpaid, \$1.90.



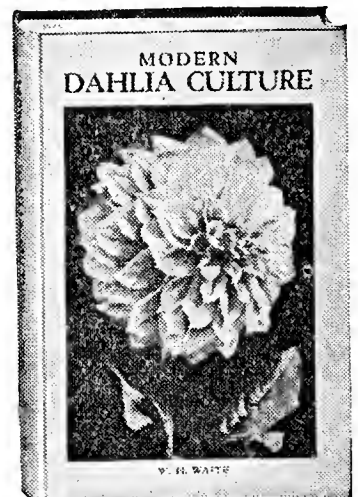
**PRACTICAL LANDSCAPE GARDENING** By Robert E. Cridland.—This book is written in commonsense style. Is primarily for the owner of a home. Tells how to plan and plant from a 20 foot plot up. Gives sketches showing where to place your flower, Rose, wild or rock garden. Has planting plans telling what varieties to plant for best effects. Working plans showing how to construct walks, drives, pergolas, terraces, pools, fountains, garden seats and rustic houses. Illustrates home ground, correct and incorrect methods. Pictures, every problem confronting the home builder. Contains 91 illustrations, 67 sketches and 33 plans of which are planting plans with planting keys. Color plate on front cover portrays a wonderful landscape scene, cloth bound. Postpaid, \$2.65.



**THE BOOK OF PERENNIALS**—By Alfred C. Hottes.—For the amateur and professional. Storehouses of information about the popular perennials — the number of over 125 separate species, suited for different locations and purposes are featured. Liberal Illustrations and practical language. Price, cloth bound, postpaid, \$1.65.

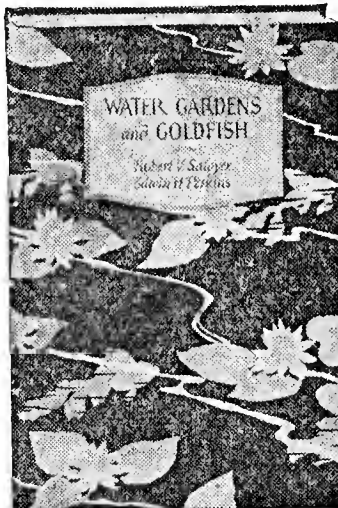


**THE WOMAN'S FLOWER GARDEN—Indoor and Outdoor**—By Jane Leslie Kift.—A book for women on the care of flowers and plants in the home and cultivation in the garden. The one with a wee garden or the owner of a suburban garden, have all been kept in mind by Miss Kift in this practical and entertaining book. 160 pages, numerous illustrations. Cloth cover, postpaid, \$1.35.



**MODERN DAHLIA CULTURE**—By W. H. Waite.—Brief, clear, complete, based on actual operations and results of a practical, experienced grower, propagator and exhibitor; written to meet the needs of the novice and to interest and inform the expert. Gives classification, culture, propagation, insects, diseases and remedies. 132 pages, 30 illustrations, 6 in full color. Cloth bound, postpaid, \$1.65.

**WATER GARDENS AND GOLDFISH**—By Robert V. Sawyer and Edwin H. Perkins.—Teaches the amateur the art of growing Water-lilies in a tub or on a balcony, leading up to the establishment of water gardens and ponds. Second half devoted to Goldfish, Varieties of Goldfish, Breeding, Fish Foods, Fish Diseases, Remedies and the Home Aquarium. 112 pages, 5x7, 59 illustrations, cloth cover, postpaid, \$1.65.



## OTHER BOOKS (Postpaid)

The Book of Annuals—Hottes.....1.65  
Birds of the Wild—Pellett.....1.90

All About Flowering Bulbs.....2.15  
Our Native Cacto—Higgins.....2.65  
City and Suburban Gardening.....2.15  
Book of Climbing Plants.....1.65  
Flower Arrangement—White.....3.15  
Flowers of the Wild—Pellett.....2.15  
Foundation Planting—Johnson 3.65  
Ornamental Dwarf Fruit Trees.....1.65  
Garden Guide.....1.10  
Gardening in the South—Briggs.....2.15  
Milady's House Plants.....1.35  
Landscaping the Small Home.....2.15  
1001 Garden Questions Ans'r'd.....1.65  
Roof Gardening—Mellon.....1.35  
Book of Shrubs—Hottes.....3.15  
Prac. Vegetable Culture.....2.15  
Book of Water Gardening.....5.00  
Write for Free Catalog of Books







# LOOK--20 PER CENT DISCOUNT



On All Prices in Book, Except  
Sweet Potatoes, Onions, Peppers  
and Cabbage Plants on page 19.  
These Are As Listed

---

## ROCK GARDEN PLANTS

**ALLIUM**—Low growing bulbous plant. Grass-like leaves, lilac colored flowers. July and August. Likes the sun.

**ARMENIA**—Blooms May and June. Rosy Red Plants. Dwarf, 3 to 6 inches. Does well in any soil. Forms evergreen turfs of green foliage. 15c; 2 for 25c.

**ABEUM**—Large double flowers; fiery red; continues to bloom nearly all summer. Very attractive. Grows 18 inches high. 15c each; 2 for 25c.

**SEDUM**—Thrives in any soil. Likes sunny places; fine for the rockery. 15c; 2 for 25c.

**SAPONARIA**—Bright Rose flowers; from May to August. Fine for the rockery. 8 inches. 15c; 2 for 25c.

**SILENE**—Grows 4 to 6 inches; pink flowers; July to October. 15c; 2 for 25c.

**AUBRIETIA**—Dainty Dwarf creeping plant for carpeting beds or rockeries, forming brilliant sheets of violet, crimson or rose for weeks. 15c; 2 for 25c.

---

## BULBS FOR FALL PLANTING

We will have a full line of Hyacinth and Tulip bulbs for October and November planting. Write for prices.

**ARTICHOKE**—Hardy perennial. Tubers for planting. 10 for 20c; 50 for 75c.

**DINER'S NEW GIANT WHITE DOUBLE SHASTA DAISY**—Flowers average 5 inches in diameter. Resembles the Aster; free flowering and continues to bloom over a long period. 20c.

**HARTJA and ELDER DAISY**—Hardy, free blooming, white daisy. Resembles the Shasta, but blooms first. 10c each.

**CROTONS**—Beautiful pot plants. Rich colors. 15c each.

---

## WATER PLANTS

**FLOATING HEART**—Beautiful leaves, brilliant yellow flowers; free bloomer, is hardy and will do well in water or on border. 25c each.

**ANACHARIS CANADENSIS GIGANTEA**—A beautiful submerged plant, dark green leaves. Price, 25c each.

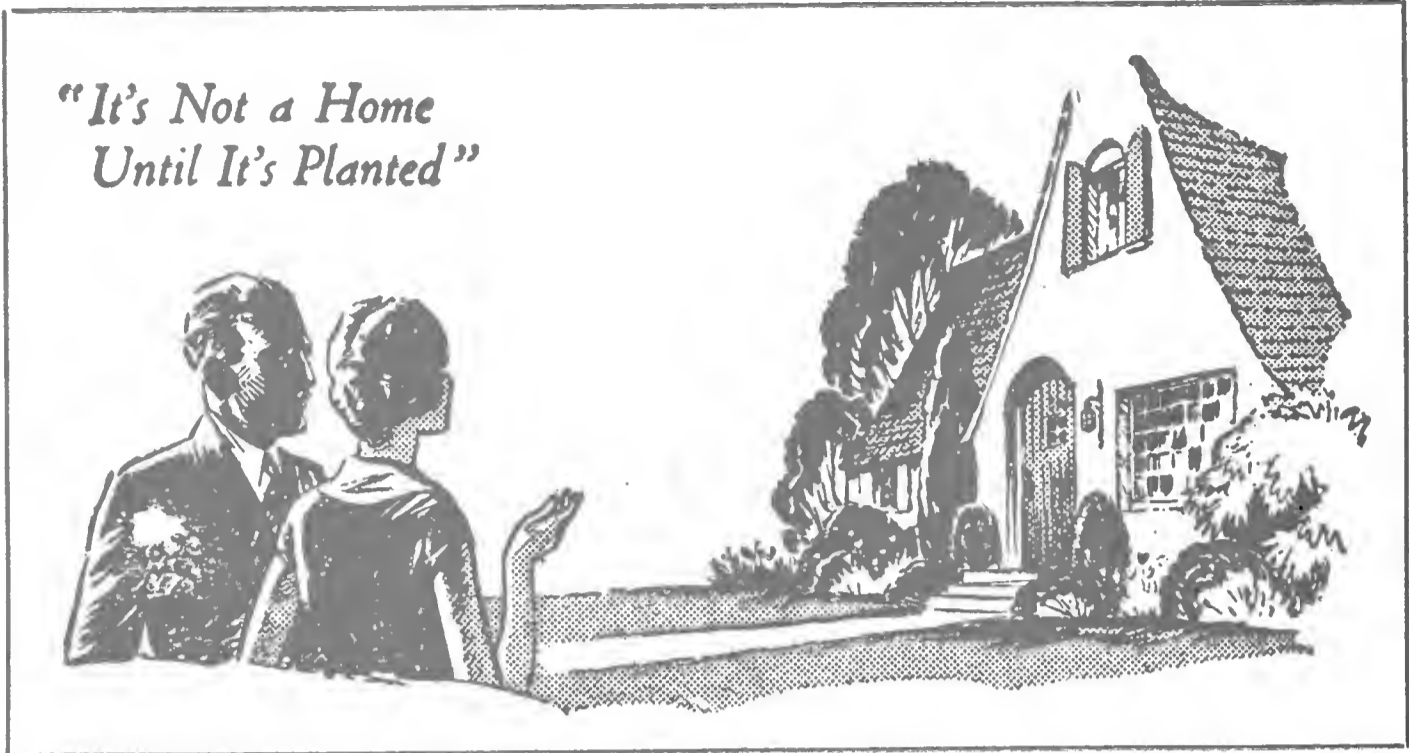
MANY OTHER WATER PLANTS ON PAGE 16 and 17.

Remember to Deduct 20 Per Cent from Order for Everything in Book Except Page 19.

Everything is Prepaid Except Balled and Burlapped Evergreens or less than 12 Fish. 12 or more fish Prepaid.



*"It's Not a Home  
Until It's Planted"*



*There Is Nothing That Costs So Little and Does So Much  
To Beautify The Home, As Flowers.*

# Taylor's Greenhouses & Nursery

## Cut Flowers – Plants – Shrubs – Evergreens

20 PER CENT DISCOUNT ALLOWED ON  
EVERYTHING EXCEPT PAGE 19

RUSSELLVILLE,

ARKANSAS

POSTMASTER

If unable to deliver, please send to  
the nearest post office in plants.

SEC. 435½ P. L. & R.

U. S. POSTAGE  
1-CENT PAID  
PERMIT No. 6  
Russellville, Ark.

From *W. W. Taylor*  
Address *Russellville Ark*

U. S. DEPARTMENT OF AGRICULTURE

D. N. Shoemaker

BUREAU OF PLANT INDUSTRY  
Horticultural Crops and Diseases

WASHINGTON HOUSES

Tech College for seven blocks,